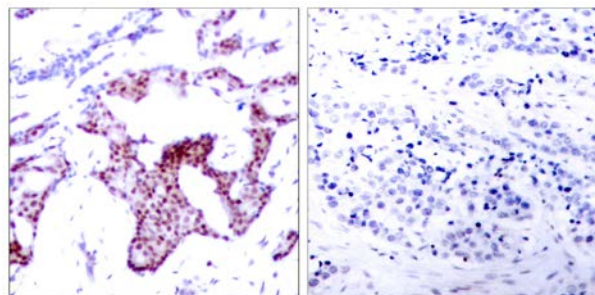




NF-κB p65 (Phospho-Ser276) Antibody

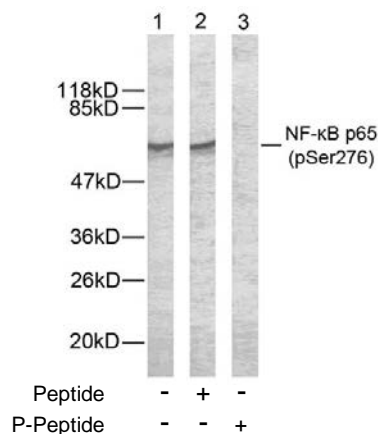
E011011

- Catalog Number:** E011011-1, E011011-2
- Amount:** 50µg/50µl, 100µg/100µl
- Form of Antibody:** Rabbit IgG in phosphate buffered saline (without Mg²⁺ and Ca²⁺), pH 7.4, 150mM NaCl, 0.02% sodium azide and 50% glycerol.
- Storage/Stability:** Store at -20°C/1 year
- Immunogen:** The antiserum was produced against synthesized phosphopeptide derived from human NF-κB p65 around the phosphorylation site of serine 276 (R-P-S^P-D-R).
- Purification:** The antibody was affinity-purified from rabbit antiserum by affinity-chromatography using epitope-specific phosphopeptide. The antibody against non-phosphopeptide was removed by chromatography using non-phosphopeptide corresponding to the phosphorylation site.
- Specificity/Sensitivity:** NF-κB p65 (phospho-Ser276) antibody detects endogenous levels of NF-κB p65 only when phosphorylated at serine 276.
- Reactivity:** Human, Mouse, Rat
- Applications:** WB: 1:500~1:1000 IHC: 1:50~1:100 IF:1:100~1:200
- Swiss-Prot No. :** Q04206
- References:** Baeuerle P A, et al. (1994) Annu Rev Immunol. 12:141-179.
Baeuerle P A, et al. (1996) Cell 87:13-20.
Haskill S, et al. (1991) Cell 65:1281-1289.



P-Peptide - +

Immunohistochemical analysis of paraffin- embedded human breast carcinoma tissue using NF-κB p65 (phospho-Ser276) antibody (E011011).



Western blot analysis of extract from HeLa cells using NF-κB p65 (phospho-Ser276) antibody (E011011).

For Research Use Only