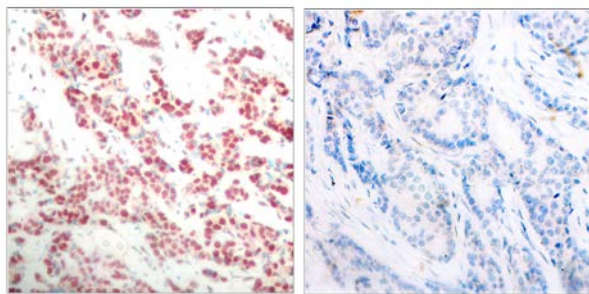




NF-κB p100/p52 (Phospho-Ser865) Antibody

E011015

- Catalog Number:** E011015-1, E011015-2
- Amount:** 50μg/50μl, 100μg/100μl
- Form of Antibody:** Rabbit IgG in phosphate buffered saline (without Mg²⁺ and Ca²⁺), pH 7.4, 150mM NaCl, 0.02% sodium azide and 50% glycerol.
- Storage/Stability:** Store at -20°C/1 year
- Immunogen:** The antiserum was produced against synthesized phosphopeptide derived from human NF-κB p100/p52 around the phosphorylation site of serine 865 (E-D-S^P-A-Y).
- Purification:** The antibody was affinity-purified from rabbit antiserum by affinity-chromatography using epitope-specific phosphopeptide. The antibody against non-phosphopeptide was removed by chromatography using non-phosphopeptide corresponding to the phosphorylation site.
- Specificity/Sensitivity:** NF-κB p100/p52 (phospho-ser865) antibody detects endogenous levels of NF-κB p100/p52 only when phosphorylated at serine 865.
- Reactivity:** Human, Mouse, Rat
- Applications:** WB: 1:500~1:1000 IHC: 1:50~1:100 IF: 1:100~1:200
- Swiss-Prot No. :** Q00653
- References:** Qu Z, et al. (2004) J Biol Chem. 279(43): 44563-44572.
Xiao G, et al. (2001) Mol Cell. 7(2): 401-409.
Baeuerle P A, et al. (1994) Annu Rev Immunol. 12:141-179.
Baeuerle P A, et al. (1996) Cell 87:13-20.

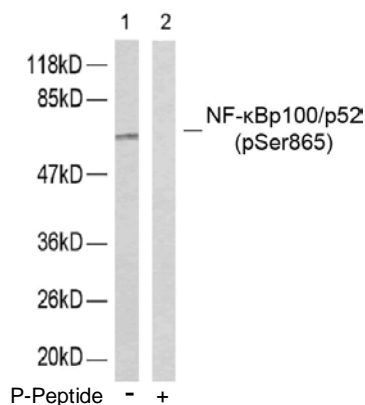


P-Peptide

-

+

Immunohistochemical analysis of paraffin- embedded human breast carcinoma tissue using NF-κB p100/p52 (phospho-ser865) antibody (E011015).



P-Peptide

-

+

Western blot analysis of extracts from ovary cancer cells using NF-κB p100/p52 (phospho-Ser865) antibody (E011015).

For Research Use Only