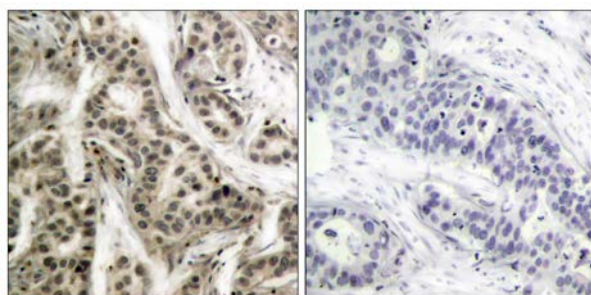




## NF-κB p105/p50 (Phospho-Ser337) Antibody

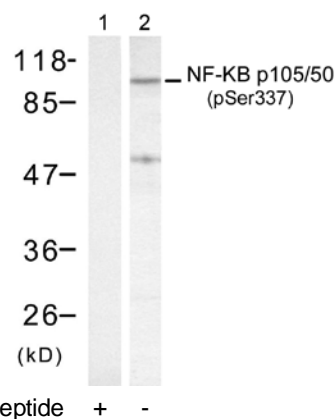
E011017

- Catalog Number:** E011017-1, E011017-2
- Amount:** 50μg/50μl, 100μg/100μl
- Form of Antibody:** Rabbit IgG in phosphate buffered saline (without Mg<sup>2+</sup> and Ca<sup>2+</sup>), pH 7.4, 150mM NaCl, 0.02% sodium azide and 50% glycerol.
- Storage/Stability:** Store at -20°C/1 year
- Immunogen:** The antiserum was produced against synthesized phosphopeptide derived from human NF-κB p105/p50 around the phosphorylation site of serine 337 (R-K-S<sup>P</sup>-D-L).
- Purification:** The antibody was affinity-purified from rabbit antiserum by affinity-chromatography using epitope-specific phosphopeptide. The antibody against non-phosphopeptide was removed by chromatography using non-phosphopeptide corresponding to the phosphorylation site.
- Specificity/Sensitivity:** NF-κB p105/p50 (phospho-Ser337) antibody detects endogenous levels of NF-κB p105/p50 only when phosphorylated at serine 337.
- Reactivity:** Human, Mouse, Rat
- Applications:** WB: 1:500~1:1000 IHC: 1:50~1:100 IF:1:100~1:200
- Swiss-Prot No. :** P19838
- References:** Hou S, et al. (2003) J Biol Chem. 278(46): 45994-45998.  
Baeuerle P A, et al. (1994) Annu Rev Immunol. 12:141-179.  
Baeuerle P A, et al. (1996) Cell 87:13-20.  
Haskill S, et al. (1991) Cell 65:1281-1289.



P-Peptide - +

Immunohistochemical analysis of paraffin-embedded human breast carcinoma tissue using NF-κB p105/p50 (phospho-Ser337) antibody (E011017).



Western blot analysis of extract from HeLa cells treated with TNF-α and using NF-κB p105/p50 (phospho-Ser337) antibody (E011017).

**For Research Use Only**