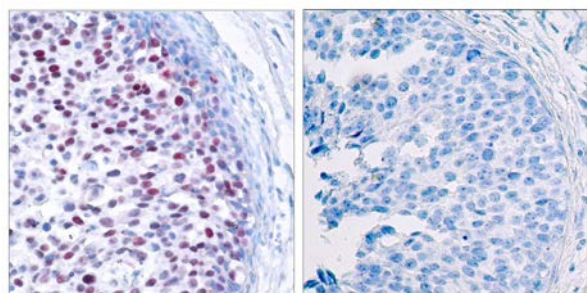




c-Jun (Phospho-Thr239) Antibody

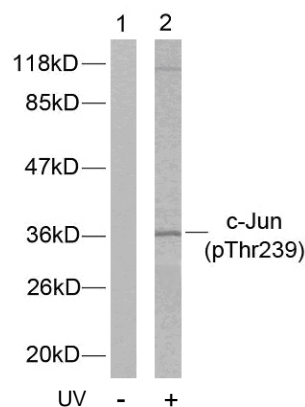
E011024

- Catalog Number:** E011024-1, E011024-2
- Amount:** 50µg/50µl, 100µg/100µl
- Form of Antibody:** Rabbit IgG in phosphate buffered saline (without Mg^{2+} and Ca^{2+}), pH 7.4, 150mM NaCl, 0.02% sodium azide and 50% glycerol.
- Storage/Stability:** Store at -20°C/1 year
- Immunogen:** The antiserum was produced against synthesized phosphopeptide derived from human c-Jun around the phosphorylation site of threonine 239 (G-E-T^P-P-P).
- Purification:** The antibody was affinity-purified from rabbit antiserum by affinity-chromatography using epitope-specific phosphopeptide. The antibody against non-phosphopeptide was removed by chromatography using non-phosphopeptide corresponding to the phosphorylation site.
- Specificity/Sensitivity:** c-Jun (phospho-Thr239) antibody detects endogenous levels of c-Jun only when phosphorylated at threonine 239.
- Reactivity:** Human, Mouse, Rat
- Applications:** WB: 1:500~1:1000 IHC: 1:50~1:100 IF: 1:100~1:200
- Swiss-Prot No. :** P05412
- References:** Boyle W J, et al. (1991) Cell. 64(3): 573-584.
Binetruy B, et al. (1991) Nature. 351: 122-127.
Smeal T, et al. (1991) Nature. 354:494-496.
Derijard B, et al. (1994) Cell. 76:1025-1037.
Kyriakis J M, et al. (1994) Nature. 369: 156-160.



P-Peptide - +

Immunohistochemical analysis of paraffin-embedded human breast carcinoma tissue using c-Jun (phospho-Thr239) antibody (E011024).



Western blot analysis of extract from HeLa cells untreated or treated with UV using c-Jun (phospho-Thr239) antibody (E011024).

For Research Use Only