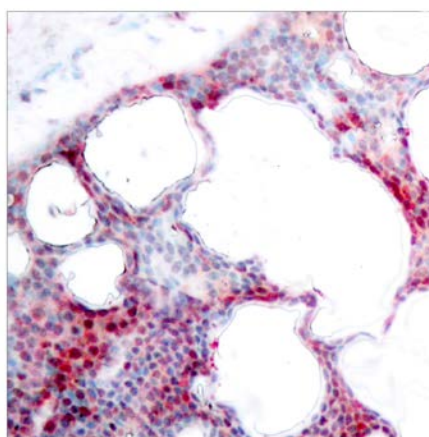




ATF-2 (Phospho-Ser62 or 44) Antibody

E011029

- Catalog Number:** E011029-1, E011029-2
- Amount:** 50µg/50µl, 100µg/100µl
- Form of Antibody:** Rabbit IgG in phosphate buffered saline (without Mg^{2+} and Ca^{2+}), pH 7.4, 150mM NaCl, 0.02% sodium azide and 50% glycerol.
- Storage/Stability:** Store at -20°C/1 year
- Immunogen:** The antiserum was produced against synthesized phosphopeptide derived from human ATF-2 around the phosphorylation site of serine 62 or 44 (N-D-S^P-V-I).
- Purification:** The antibody was affinity-purified from rabbit antiserum by affinity-chromatography using epitope-specific phosphopeptide. The antibody against non-phosphopeptide was removed by chromatography using non-phosphopeptide corresponding to the phosphorylation site.
- Specificity/Sensitivity:** ATF-2 (phospho-Ser62 or 44) antibody detects endogenous levels of ATF-2 only when phosphorylated at serine 62 or 44.
- Reactivity:** Human, Mouse, Rat
- Applications:** IHC: 1:50~1:100
- Swiss-Prot No. :** P15336
- References:** Sevilla A, et al. (2004) J Biol Chem. 279(26):27458-27465.
Sakurai A, et al. (1991) Biochem Biophys Res Commun. 181(2): 629-635.
Abdel-Hafiz H A, et al. (1992) Mol Endocrinol. 6: 2079-2089.
Gupta S, et al. (1995) Science. 267: 389-393.
Van Dam H, et al. (1995) EMBO J. 14(8): 1798-1811.



Immunohistochemical analysis of paraffin-embedded human breast carcinoma tissue using ATF-2 (phospho-Ser62 or 44) antibody (E011029).

For Research Use Only