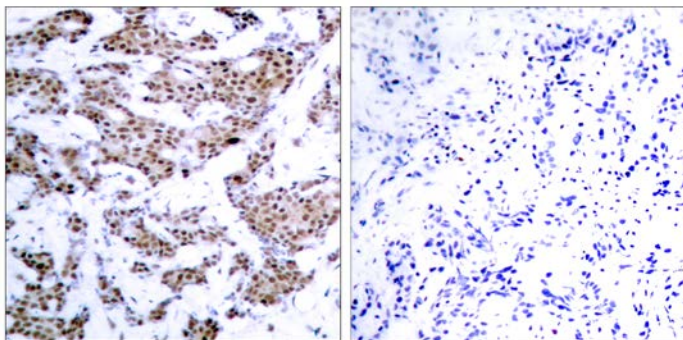




MEF2A (Phospho-Thr312) Antibody

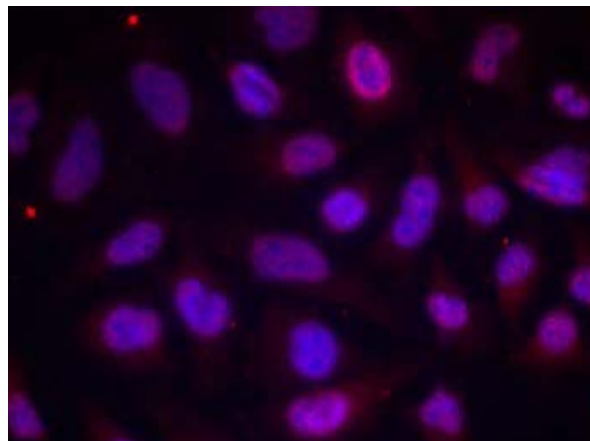
E011039

- Catalog Number:** E011039-1, E011039-2
- Amount:** 50µg/50µl, 100µg/100µl
- Form of Antibody:** Rabbit IgG in phosphate buffered saline (without Mg^{2+} and Ca^{2+}), pH 7.4, 150mM NaCl, 0.02% sodium azide and 50% glycerol.
- Storage/Stability:** Store at -20°C/1 year
- Immunogen:** The antiserum was produced against synthesized phosphopeptide derived from human MEF2A around the phosphorylation site of threonine 312 (L-A-T^P-P-V).
- Purification:** The antibody was affinity-purified from rabbit antiserum by affinity-chromatography using epitope-specific phosphopeptide. The antibody against non-phosphopeptide was removed by chromatography using non-phosphopeptide corresponding to the phosphorylation site.
- Specificity/Sensitivity:** MEF2A (phospho-Thr312) antibody detects endogenous levels of MEF2A only when phosphorylated at threonine 312.
- Reactivity:** Human, Mouse, Rat
- Applications:** WB:1:500-1000 IHC: 1:50~1:100 IF:1:100~1:200
- Swiss-Prot No. :** Q02078
- References:** Kato Y, et al. (2000) J Biol Chem. 275(24): 18534-18540.
Zhao M, et al. (1999) Mol Cell Biol. 19(1): 21-30.



P-Peptide - +

Immunohistochemical analysis of paraffin-embedded human breast carcinoma tissue, using MEF2A (phospho-Thr312) antibody (E011039).



Immunofluorescence staining of methanol-fixed HeLa cells using MEF2A (phospho-Thr312) antibody (E011039, Red).

For Research Use Only