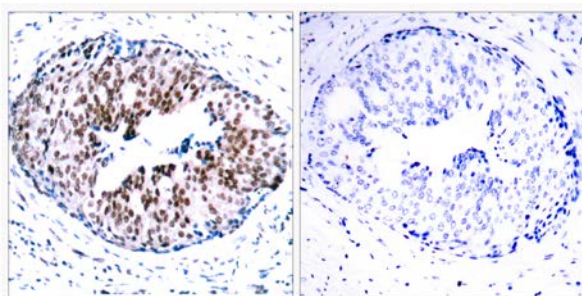




## STAT5A (Phospho-Ser780) Antibody

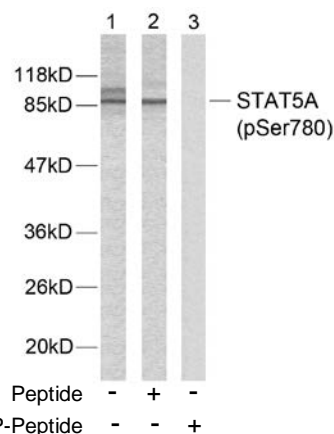
E011049

- Catalog Number:** E011049-1, E011049-2
- Amount:** 50µg/50µl, 100µg/100µl
- Form of Antibody:** Rabbit IgG in phosphate buffered saline (without  $Mg^{2+}$  and  $Ca^{2+}$ ), pH 7.4, 150mM NaCl, 0.02% sodium azide and 50% glycerol.
- Storage/Stability:** Store at -20°C/1 year
- Immunogen:** The antiserum was produced against synthesized phosphopeptide derived from human STAT5A around the phosphorylation site of serine 780 (R-L-S<sup>P</sup>-P-P).
- Purification:** The antibody was affinity-purified from rabbit antiserum by affinity-chromatography using epitope-specific phosphopeptide. The antibody against non-phosphopeptide was removed by chromatography using non-phosphopeptide corresponding to the phosphorylation site.
- Specificity/Sensitivity:** STAT5A (phospho-Ser780) antibody detects endogenous levels of STAT5A only when phosphorylated at serine 780.
- Reactivity:** Human, Mouse, Rat
- Applications:** WB: 1:500~1:1000 IHC: 1:50~1:100
- Swiss-Prot No. :** P42229
- References:** Gouilleux F, et al. (1994) EMBO J. 13: 4361-4369.  
Dentelli P, et al. (1999) J Immunol. 163: 2151-2159.  
Meinke A, et al. (1996) Mol Cell Biol. 16: 6937-6944.



P-Peptide                      -                      +

Immunohistochemical analysis of paraffin- embedded human breast carcinoma tissue using STAT5A (phospho-Ser780) antibody (E011049).



Western blot analysis of extracts from HeLa cells using STAT5A (phospho-Ser780) antibody (E011049).

**For Research Use Only**