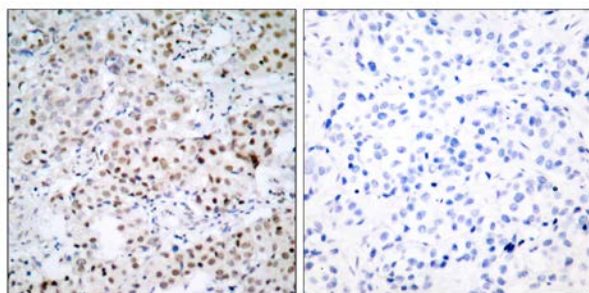




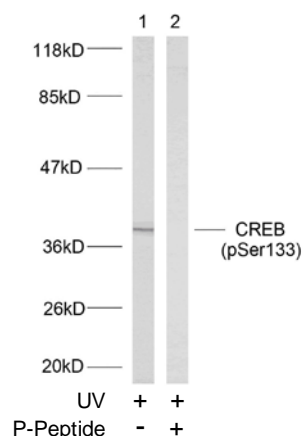
CREB (Phospho-Ser133) Antibody

E011052

- Catalog Number:** E011052-1, E011052-2
- Amount:** 50µg/50µl, 100µg/100µl
- Form of Antibody:** Rabbit IgG in phosphate buffered saline (without Mg^{2+} and Ca^{2+}), pH 7.4, 150mM NaCl, 0.02% sodium azide and 50% glycerol.
- Storage/Stability:** Store at -20°C/1 year
- Immunogen:** The antiserum was produced against synthesized phosphopeptide derived from human CREB around the phosphorylation site of serine 133 (R-P-S^P-Y-R).
- Purification:** The antibody was affinity-purified from rabbit antiserum by affinity-chromatography using epitope-specific phosphopeptide. The antibody against non-phosphopeptide was removed by chromatography using non-phosphopeptide corresponding to the phosphorylation site.
- Specificity/Sensitivity:** CREB (phospho-Ser133) antibody detects endogenous levels of CREB only when phosphorylated at serine 133.
- Reactivity:** Human, Mouse, Rat
- Applications:** WB: 1:500~1:1000 IHC: 1:50~1:100
- Swiss-Prot No.:** P16220
- References:** Xing J, et al. (1998) Mol Cell Biol 18(4): 1946-55.
Tan Y, et al. (1996) EMBO J; 15(17): 4629-42.
Hao, M. et al. (1996) J. Biol. Chem. 271, 29380-29385.
Mayo LD, et al. (2001) Biol Chem; 276(27): 25184-9.



Immunohistochemical analysis of paraffin-embedded human breast carcinoma tissue using CREB (phospho-Ser133) antibody (E011052).



Western blot analysis of extracts from HeLa cells using CREB (phospho-Ser133) antibody (E011052).

For Research Use Only