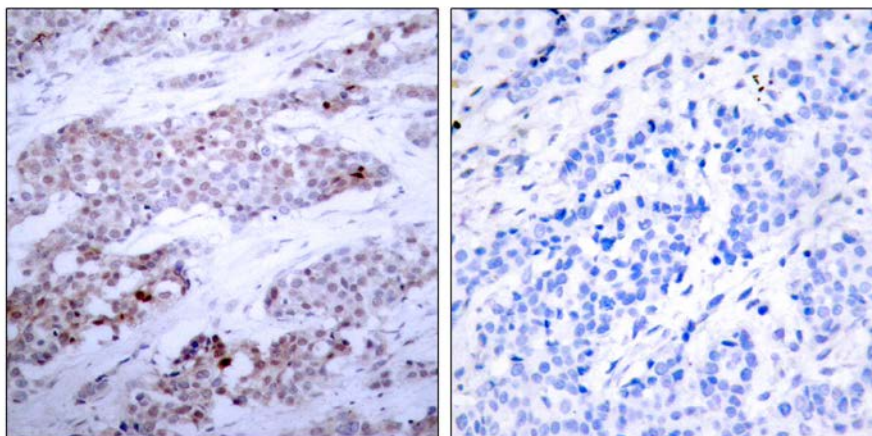




## ATF4 (Phospho-Ser245) Antibody

E011053

- Catalog Number:** E011053-1, E011053-2  
**Amount:** 50µg/50µl, 100µg/100µl  
**Form of Antibody:** Rabbit IgG in phosphate buffered saline (without  $Mg^{2+}$  and  $Ca^{2+}$ ), pH 7.4, 150mM NaCl, 0.02% sodium azide and 50% glycerol.  
**Storage/Stability:** Store at -20°C/1 year  
**Immunogen:** The antiserum was produced against synthesized phosphopeptide derived from human ATF4 around the phosphorylation site of serine 245 (N-R-S<sup>P</sup>-L-P).  
**Purification:** The antibody was affinity-purified from rabbit antiserum by affinity-chromatography using epitope-specific phosphopeptide. The antibody against non-phosphopeptide was removed by chromatography using non-phosphopeptide corresponding to the phosphorylation site.  
**Specificity/Sensitivity:** ATF4 (phospho-Ser245) antibody detects endogenous levels of ATF4 only when phosphorylated at serine 245.  
**Reactivity:** Human  
**Applications:** IHC: 1:50~1:100  
**Swiss-Prot No. :** P18848  
**References:** Yang X, et al. (2004). Cell.117(3): 387-398.



P-Peptide

-

+

Immunohistochemical analysis of paraffin-embedded human breast carcinoma tissue, using ATF4 (phospho-Ser245) antibody (E011053).

**For Research Use Only**