



## Akt (Phospho-Thr308) Antibody

E011055

**Catalog Number:** E011055-1, E011055-2

**Amount:** 50µg/50µl, 100µg/100µl

**Form of Antibody:** Rabbit IgG in phosphate buffered saline (without  $Mg^{2+}$  and  $Ca^{2+}$ ), pH 7.4, 150mM NaCl, 0.02% sodium azide and 50% glycerol.

**Storage/Stability:** Store at -20°C/1 year

**Immunogen:** The antiserum was produced against synthesized phosphopeptide derived from human Akt around the phosphorylation site of threonine 308 (M-K-T<sup>P</sup>-F-C).

**Purification:** The antibody was affinity-purified from rabbit antiserum by affinity-chromatography using epitope-specific phosphopeptide. The antibody against non-phosphopeptide was removed by chromatography using non-phosphopeptide corresponding to the phosphorylation site.

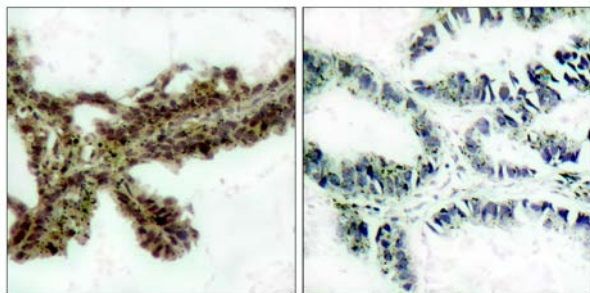
**Specificity/Sensitivity:** Akt (phospho-Thr308) antibody detects endogenous levels of Akt only when phosphorylated at threonine 308.

**Reactivity:** Human, Mouse, Rat

**Applications:** WB: 1:500~1:1000 IHC: 1:50~1:100 IF: 1:100-200

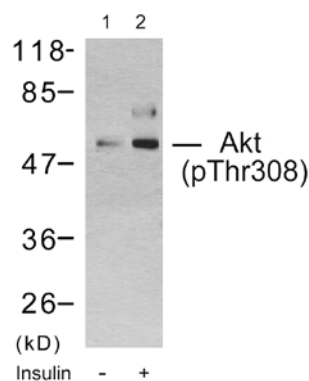
**Swiss-Prot No. :** P31749

**References:** Tremblay F, et al. (2005)Diabetes; 54(9): 2674-84.  
Xu BE, et al. (2005)J Biol Chem; 280(40): 34218-23.  
Samuels Y, et al. (2005)Cancer Cell; 7(6): 561-73.  
Di Maira G, et al. (2005)Cell Death Differ; 12(6): 668-77.



P-Peptide - +

Immunohistochemical analysis of paraffin-embedded human lung carcinoma tissue, using Akt (phospho-Thr308) antibody(E011055).



Western blot analysis using Akt (phospho-Thr308) antibody (E011055): Lane1: The extract from 293 cells untreated; Lane 2: The extract from 293 cells treated with insulin.

**For Research Use Only**