



Ezrin (Phospho-Tyr353) Antibody

E011063

Catalog Number: E011063-1, E011063-2

Amount: 50µg/50µl, 100µg/100µl

Swiss-Prot No. : P15311

All Names: Cytovillin, EZRI, VIL2, Villin 2, p81

All Sites: Human: Tyr353; Mouse: Tyr353

Form of Antibody: Rabbit IgG in phosphate buffered saline (without Mg^{2+} and Ca^{2+}), pH 7.4, 150mM NaCl, 0.02% sodium azide and 50% glycerol.

Storage/Stability: Store at -20°C/1 year

Immunogen: The antiserum was produced against synthesized phosphopeptide derived from human Ezrin around the phosphorylation site of tyrosine 353 (Q-D-Y^P-E-E).

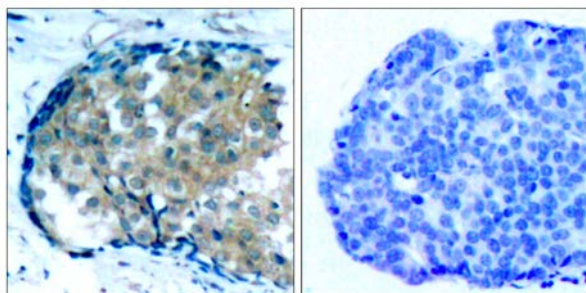
Purification: The antibody was affinity-purified from rabbit antiserum by affinity-chromatography using epitope-specific phosphopeptide. The antibody against non-phosphopeptide was removed by chromatography using non-phosphopeptide corresponding to the phosphorylation site.

Specificity/Sensitivity: Ezrin (phospho-Tyr353) antibody detects endogenous levels of Ezrin only when phosphorylated at tyrosine 353.

Reactivity: Human, Mouse

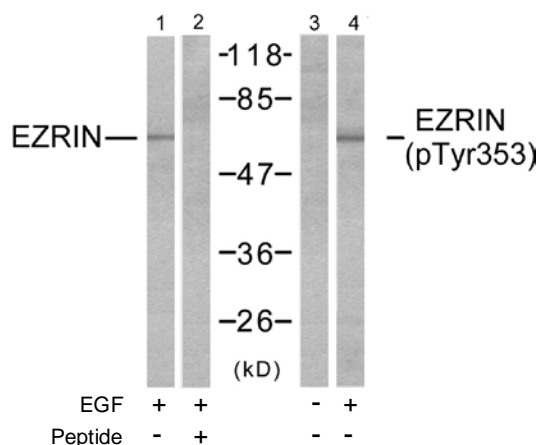
Applications: WB: 1:500~1:1000 IHC: 1:50~1:100

References: Zhao H, et al. (2004) Proc Natl Acad Sci U S A 101 (25): 9485-9490.
Wang Q, et al. (2003) J Biol Chem 278(48): 47731-47743.
Gautreau A, et al. (1999) Proc Natl Acad Sci U S A 96(13): 7300-7305.
Crepaldi T, et al. (1997) J Cell Biol 138(2): 423-34.



P-Peptide - +

Immunohistochemical analysis of paraffin-embedded human breast carcinoma tissue, using Ezrin (phospho-Tyr353) antibody (E011063).



Western blot analysis of extracts from A431 cells, untreated or EGF-treated (200ng/ml, 30min), using Ezrin (Ab-353) antibody (E021094, Lane 1 and 2) and Ezrin (phospho-Tyr353) antibody (E011063, Lane 3 and 4).

For Research Use Only