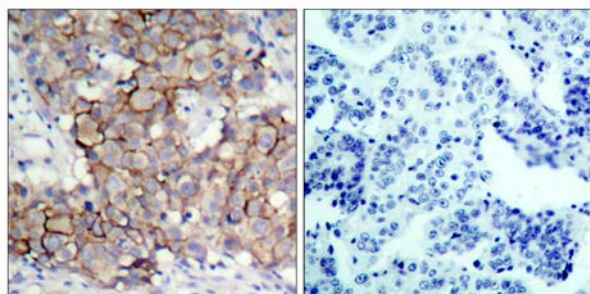




HER2 (Phospho-Tyr877) Antibody

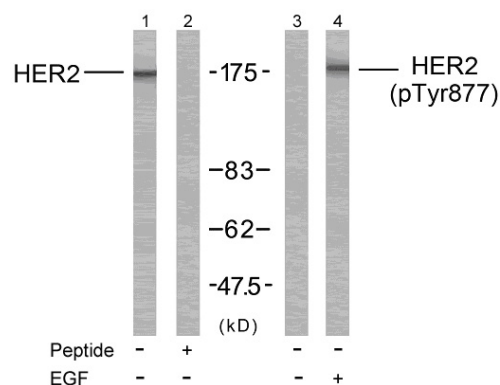
E011075

- Catalog Number:** E011075-1, E011075-2
- Amount:** 50µg/50µl, 100µg/100µl
- Form of Antibody:** Rabbit IgG in phosphate buffered saline (without Mg^{2+} and Ca^{2+}), pH 7.4, 150mM NaCl, 0.02% sodium azide and 50% glycerol.
- Storage/Stability:** Store at -20°C/1 year
- Immunogen:** The antiserum was produced against synthesized phosphopeptide derived from human HER2 around the phosphorylation site of tyrosine 877 (T-E-Y^P-H-A).
- Purification:** The antibody was affinity-purified from rabbit antiserum by affinity-chromatography using epitope-specific phosphopeptide. The antibody against non-phosphopeptide was removed by chromatography using non-phosphopeptide corresponding to the phosphorylation site.
- Specificity/Sensitivity:** HER2 (phospho-Tyr877) antibody detects endogenous levels of HER2 only when phosphorylated at tyrosine 877.
- Reactivity:** Human, Mouse, Rat
- Applications:** WB: 1:500~1:1000 IHC: 1:50~1:100 IF:1:100~1:200
- Swiss-Prot No. :** P04626
- References:** Dittadi, R. et al. (2000) J. Natl. Cancer Inst. 92, 1443-1444.
Muthuswamy, S. K. et al. (1999) Mol. Cell. Biol. 19, 6845-6857.
Qian, X. et al. (1994) Proc. Natl. Acad. Sci. USA 91, 1500-1504.



P-Peptide - +

Immunohistochemical analysis of paraffin-embedded human breast carcinoma tissue, using HER2 (phospho-Tyr877) antibody (E011075).



Western blot analysis of extract from MDA-MB-231 cells treated or untreated with EGF using HER2 (Ab-877) Antibody (E021070, Line 1 and 2) and HER2 (phospho-Tyr877) antibody (E011075, Line 3 and 4).

For Research Use Only