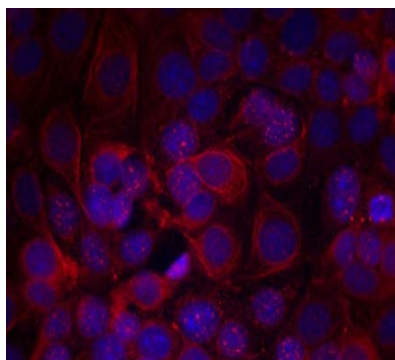




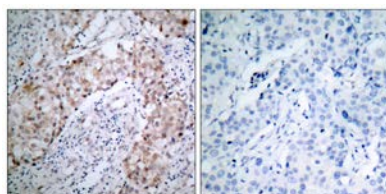
HER2 (Phospho-Tyr1221/Tyr1222) Antibody

E011076

- Catalog Number:** E011076-1, E011076-2
Amount: 50µg/50µl, 100µg/100µl
Form of Antibody: Rabbit IgG in phosphate buffered saline (without Mg²⁺ and Ca²⁺), pH 7.4, 150mM NaCl, 0.02% sodium azide and 50% glycerol.
Storage/Stability: Store at -20°C/1 year
Immunogen: The antiserum was produced against synthesized phosphopeptide derived from human HER2 around the phosphorylation site of tyrosine1221/1222 (N-L-Y^P-Y^P-W).
Purification: The antibody was affinity-purified from rabbit antiserum by affinity-chromatography using epitope-specific phosphopeptide. The antibody against non-phosphopeptide was removed by chromatography using non-phosphopeptide corresponding to the phosphorylation site.
Specificity/Sensitivity: HER2 (phospho-Tyr1221/Tyr1222) antibody detects endogenous levels of HER2 only when phosphorylated at tyrosine 1221/1222.
Reactivity: Human
Applications: WB: 1:500~1:1000 IHC: 1:50~1:100 IF:1:100~1:200
Swiss-Prot No. : P04626
References: Marone R, et al. (2004) Nat Cell Biol; 6(6): 515-22.
 Ren Z, et al. (2002) J Biol Chem; 277(41): 38486-93.

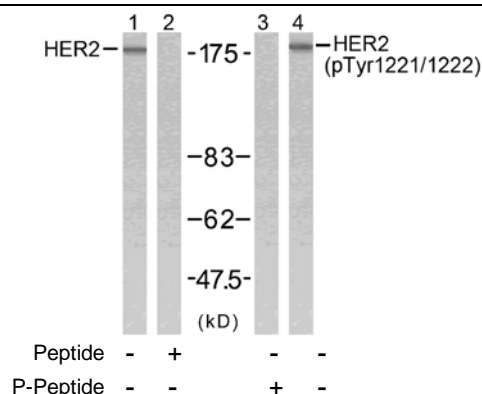


Immunofluorescence staining of methanol-fixed MCF7 cells Using HER2 (phospho-Tyr1221/Tyr1222) antibody (E011076, Red).



P-Peptide - +

Immunohistochemical analysis of paraffin-embedded human breast carcinoma tissue using HER2 (phospho-Tyr1221/Tyr1222) antibody (E011076).



Western blot analysis of extracts from SK-OV3 cells using HER2 (Ab-1221/1222) antibody (E021071, Line 1 and 2) and HER2 (phospho-Tyr1221/Tyr1222) antibody (E011076, Line 3 and 4).

For Research Use Only