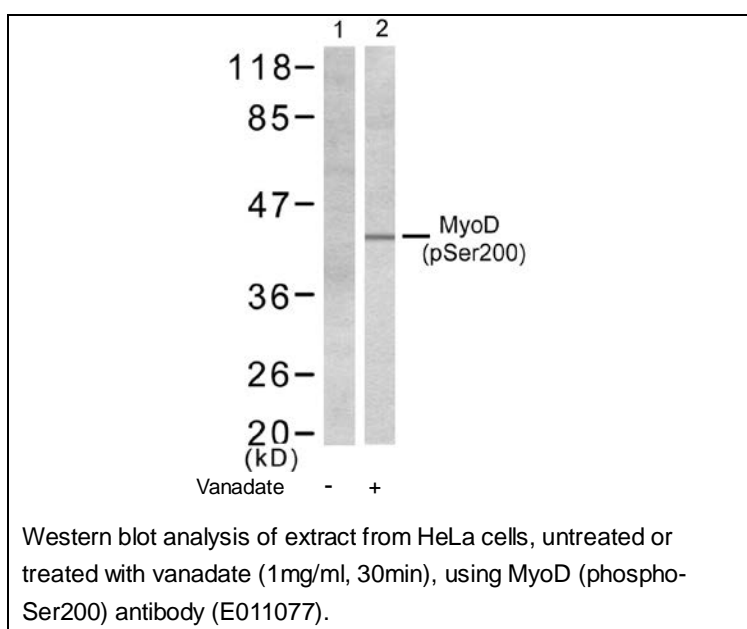




MyoD (Phospho-Ser200) Antibody

E011077

- Catalog Number:** E011077-1, E011077-2
Amount: 50µg/50µl, 100µg/100µl
Swiss-Prot No. : P15172
Form of Antibody: Rabbit IgG in phosphate buffered saline (without Mg^{2+} and Ca^{2+}), pH 7.4, 150mM NaCl, 0.02% sodium azide and 50% glycerol.
Storage/Stability: Store at -20°C/1 year
Immunogen: The antiserum was produced against synthesized phosphopeptide derived from human MyoD around the phosphorylation site of serine 200 (A-S^PP-R).
Purification: The antibody was affinity-purified from rabbit antiserum by affinity-chromatography using epitope-specific phosphopeptide. The antibody against non-phosphopeptide was removed by chromatography using non-phosphopeptide corresponding to the phosphorylation site.
Specificity/Sensitivity: MyoD (phospho-Ser200) antibody detects endogenous levels of MyoD only when phosphorylated at serine 200.
Reactivity: Human, Mouse, Rat
Applications: WB: 1:500~1:1000
References: Emmanuel G, et al. J. Biol. Chem., Jun 2000; 275: 18767 - 18776
Tintignac LA, et al. Mol Cell Biol. 2004 Feb; 24(4): 1809-1821.
Kitzmann M, et al. Mol Cell Biol. 1999 Apr; 19(4): 3167-3176.

**For Research Use Only**

