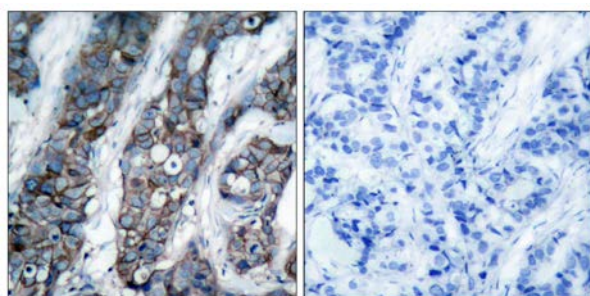




## HER2 (Phospho-Tyr1248) Antibody

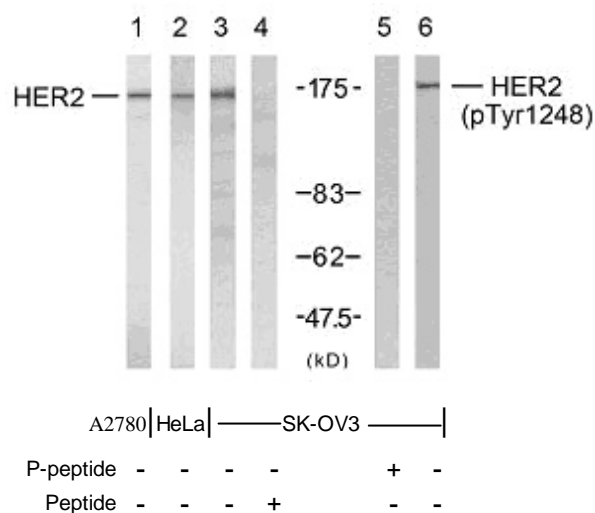
E011079

- Catalog Number:** E011079-1, E011079-2  
**Amount:** 50µg/50µl, 100µg/100µl  
**Form of Antibody:** Rabbit IgG in phosphate buffered saline (without Mg<sup>2+</sup> and Ca<sup>2+</sup>), pH 7.4, 150mM NaCl, 0.02% sodium azide and 50% glycerol.  
**Storage/Stability:** Store at -20°C/1 year  
**Immunogen:** The antiserum was produced against synthesized phosphopeptide derived from human HER2 around the phosphorylation site of tyrosine1248 (P-E-Y<sup>P</sup>-L-G).  
**Purification:** The antibody was affinity-purified from rabbit antiserum by affinity-chromatography using epitope-specific phosphopeptide. The antibody against non-phosphopeptide was removed by chromatography using non-phosphopeptide corresponding to the phosphorylation site.  
**Specificity/Sensitivity:** HER2 (phospho-Tyr1248) antibody detects endogenous levels of HER2 only when phosphorylated at tyrosine1248.  
**Reactivity:** Human, Mouse, Rat  
**Applications:** WB: 1:500~1:1000 IHC: 1:50~1:100 IF:1:100~1:200  
**Swiss-Prot No. :** P04626  
**References:** Ramsauer VP, et al. (2003) J Biol Chem; 278(32): 30142-7.  
 Jepson S, et al. (2002) Oncogene; 21(49): 7524-32.  
 Ren Z, et al. (2002) J Biol Chem; 277(41): 38486-93.  
 Eppenberger-Castori S, et al. (2001) J Clin Oncol; 19(3): 645-56.



P-Peptide - +

Immunohistochemical analysis of paraffin-embedded human breast carcinoma tissue using HER2 (phospho-Tyr1248) antibody (E011079).



Western blot analysis using HER2 (Ab-1248) antibody (E011079, Line 1, 2, 3 and 4) and HER2 (phospho-Tyr1248) antibody (E011079, Line 5 and 6).

**For Research Use Only**