



EGFR (Phospho-Ser1070) Antibody

E011080

Catalog Number: E011080-1, E011080-2

Amount: 50µg/50µl, 100µg/100µl

Form of Antibody: Rabbit IgG in phosphate buffered saline (without Mg^{2+} and Ca^{2+}), pH 7.4, 150mM NaCl, 0.02% sodium azide and 50% glycerol.

Storage/Stability: Store at -20°C/1 year

Immunogen: The antiserum was produced against synthesized phosphopeptide derived from human EGFR around the phosphorylation site of serine 1070 (R-Y-S^P-S-D).

Purification: The antibody was affinity-purified from rabbit antiserum by affinity-chromatography using epitope-specific phosphopeptide. The antibody against non-phosphopeptide was removed by chromatography using non-phosphopeptide corresponding to the phosphorylation site.

Specificity/Sensitivity: EGFR (phospho-Ser1070) antibody detects endogenous levels of EGFR only when phosphorylated at serine1070.

Reactivity: Human, Mouse, Rat

Applications: WB: 1:500~1:1000 IHC: 1:50~1:100

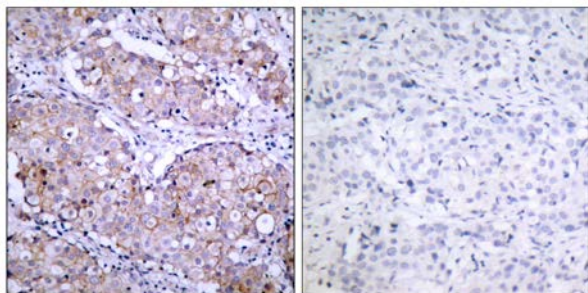
Swiss-Prot No. : P00533

References: Feinmesser RL, et al. (1999) J Biol Chem; 274(23): 16168-73.

Gamou S, et al. (1995) FEBS Lett; 357(2): 161-4.

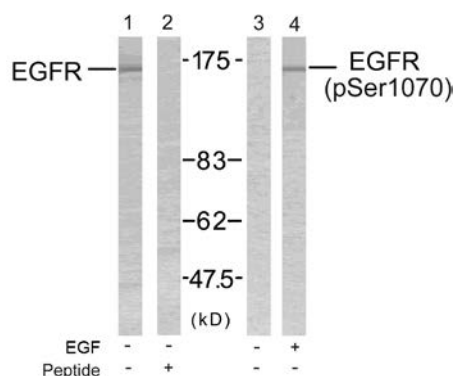
Gamou S, et al. (1994) J Cell Physiol; 158(1): 151-9.

Heisermann GJ, et al. (1988) J Biol Chem; 263(26): 13152-8.



P-Peptide - +

Immunohistochemical analysis of paraffin- embedded human breast carcinoma tissue, using EGFR (phospho-Ser1070) antibody (E011080).



Western blot analysis of extract from SK-OV3 cells untreated or treated with EGF using EGFR (Ab-1070) antibody (E021073, Lane 1 and 2) and EGFR (phospho- Ser1070) antibody (E011080, Lane 3 and 4).

For Research Use Only