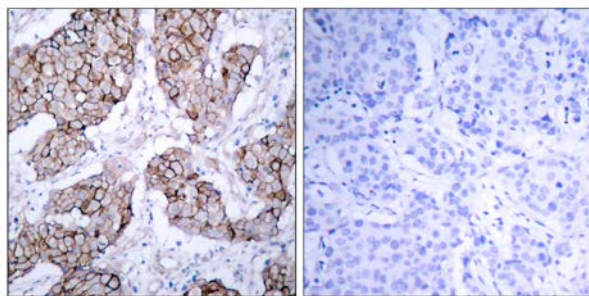




## EGFR (Phospho-Tyr1092) Antibody

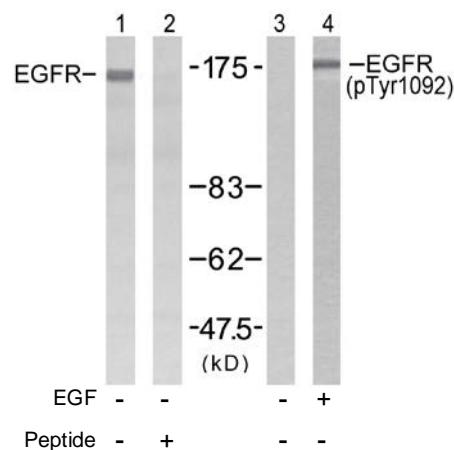
E011081

- Catalog Number:** E011081-1, E011081-2
- Amount:** 50µg/50µl, 100µg/100µl
- Form of Antibody:** Rabbit IgG in phosphate buffered saline (without  $Mg^{2+}$  and  $Ca^{2+}$ ), pH 7.4, 150mM NaCl, 0.02% sodium azide and 50% glycerol.
- Storage/Stability:** Store at -20°C/1 year
- Immunogen:** The antiserum was produced against synthesized phosphopeptide derived from human EGFR around the phosphorylation site of tyrosine1092 (P-E-Y<sup>P</sup>-I-N).
- Purification:** The antibody was affinity-purified from rabbit antiserum by affinity-chromatography using epitope-specific phosphopeptide. The antibody against non-phosphopeptide was removed by chromatography using non-phosphopeptide corresponding to the phosphorylation site.
- Specificity/Sensitivity:** EGFR (phospho-tyr1092) antibody detects endogenous levels of EGFR only when phosphorylated at tyrosine 1092.
- Reactivity:** Human, Mouse, Rat
- Applications:** WB: 1:500~1:1000 IHC: 1:50~1:100
- Swiss-Prot No. :** P00533
- References:** Buerger C, et al. (2003) J Biol Chem; 278(39): 37610-21.  
Wang XQ, (2003) J Biol Chem; 278(49): 48770-8.  
Saito T, et al. (2004) Endocrinology; 145(9): 4232-43.  
Pao W, et al. (2004) Proc Natl Acad Sci U S A; 101(36): 13306-11.



P-Peptide                      -                      +

Immunohistochemical analysis of paraffin- embedded human breast carcinoma tissue using EGFR (phospho-Tyr1092) antibody (E011081).



Western blot analysis of extracts from HUVEC cells using EGFR (Ab-1092) antibody (E021074, Lane 1 and 2) and EGFR (phospho-Tyr1092) antibody (E011081, Lane 3 and 4).

**For Research Use Only**