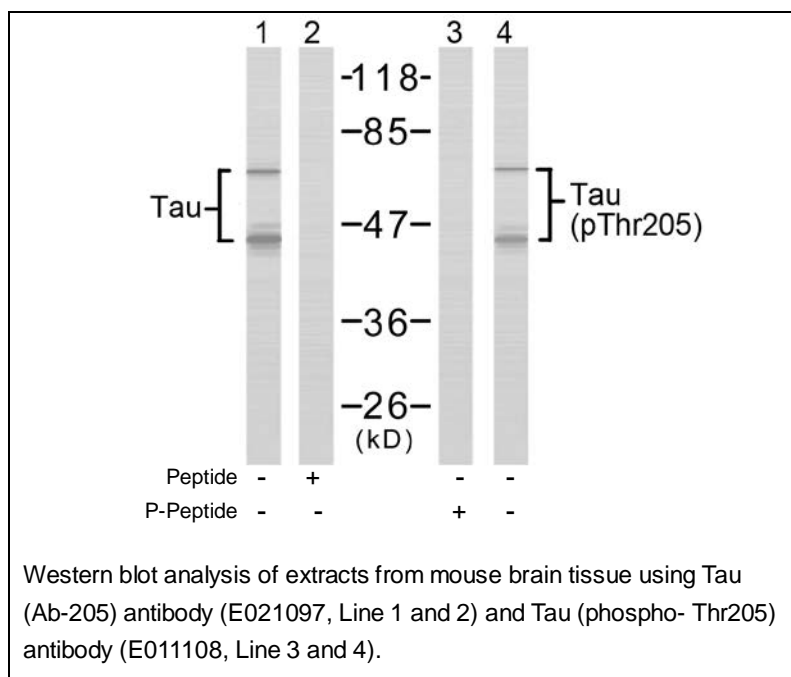




Tau (Phospho-Thr205) Antibody

E011108

- Catalog Number:** E011108-1, E011108-2
- Amount:** 50µg/50µl, 100µg/100µl
- Form of Antibody:** Rabbit IgG in phosphate buffered saline (without Mg^{2+} and Ca^{2+}), pH 7.4, 150mM NaCl, 0.02% sodium azide and 50% glycerol.
- Storage/Stability:** Store at -20°C/1 year
- Immunogen:** The antiserum was produced against synthesized phosphopeptide derived from human Tau around the phosphorylation site of threonine 205 (P-G-T^P-P-G).
- Purification:** The antibody was affinity-purified from rabbit antiserum by affinity-chromatography using epitope-specific phosphopeptide. The antibody against non-phosphopeptide was removed by chromatography using non-phosphopeptide corresponding to the phosphorylation site.
- Specificity/Sensitivity:** Tau (phospho-Thr205) antibody detects endogenous levels of Tau only when phosphorylated at threonine 205.
- Reactivity:** Human, Mouse, Rat
- Applications:** WB: 1:500~1:1000
- Swiss-Prot No. :** P10636
- References:** del C Alonso A, et al. (2004) J Biol Chem; 279(33): 34873-81.
Li G, Yin H, Kuret J (2004) J Biol Chem; 279(16): 15938-45.
Giasson BI, et al. (2002) Biochemistry; 41(51): 15376-87.
Liu F, et al. (2002) FEBS Lett; 530(1-3): 209.



For Research Use Only