



FKHR (Phospho-Ser256) Antibody

E011115

Catalog Number: E011115-1, E011115-2

Amount: 50µg/50µl, 100µg/100µl

Form of Antibody: Rabbit IgG in phosphate buffered saline (without Mg^{2+} and Ca^{2+}), pH 7.4, 150mM NaCl, 0.02% sodium azide and 50% glycerol.

Storage/Stability: Store at -20°C/1 year

Immunogen: The antiserum was produced against synthesized phosphopeptide derived from human FKHR around the phosphorylation site of serine 256 (A-A-S^P-M-D).

Purification: The antibody was affinity-purified from rabbit antiserum by affinity-chromatography using epitope-specific phosphopeptide. The antibody against non-phosphopeptide was removed by chromatography using non-phosphopeptide corresponding to the phosphorylation site.

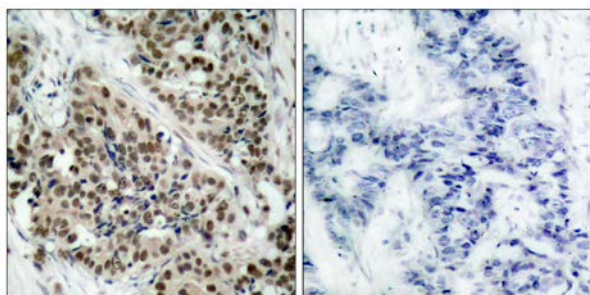
Specificity/Sensitivity: FKHR (phospho-Ser256) antibody detects endogenous levels of FKHR only when phosphorylated at serine 256.

Reactivity: Human, Mouse, Rat

Applications: WB: 1:500~1:1000 IHC: 1:50~1:100

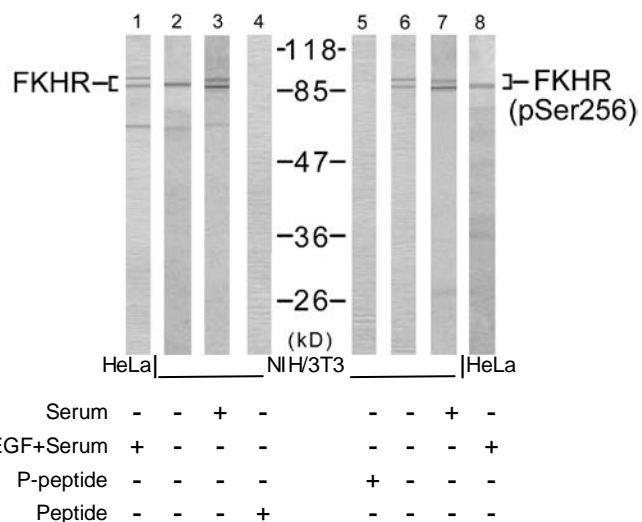
Swiss-Prot No. : Q12778

References: Gan L, et al. (2005) J Neurochem; 93(5): 1209-19.
Smith WW, et al. (2005) J Cell Biol; 169(2): 331-9.
Di Maira G, et al. (2005) Cell Death Differ; 12(6): 668-77.
Horn S, et al. (2004) Leukemia; 18(11): 1839-49.



P-Peptide - +

Immunohistochemical analysis of paraffin- embedded human breast carcinoma tissue using FKHR (phospho-Ser256) antibody (E011115).



Western blot analysis using FKHR (Ab-256) antibody (E021138, Lane 1, 2, 3 and 4) and FKHR (phospho-Ser256) antibody (E011115, Lane 5, 6, 7 and 8).

For Research Use Only