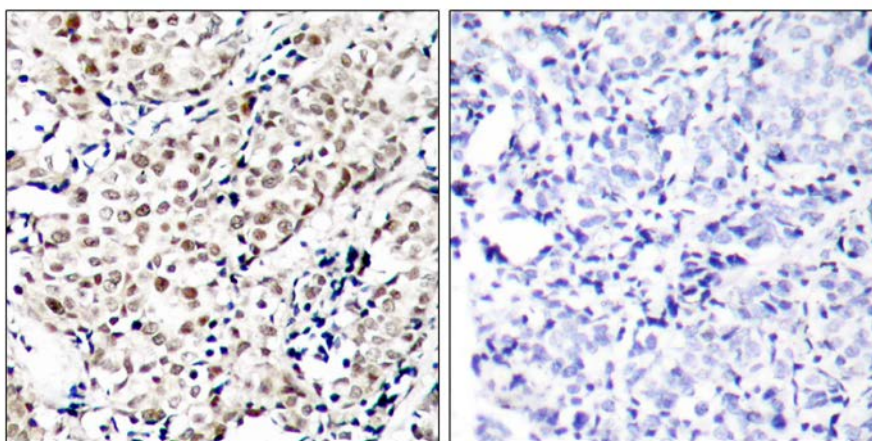




Chk1 (Phospho-Ser345) Antibody

E011121

- Catalog Number:** E011121-1, E011121-2
Amount: 50µg/50µl, 100µg/100µl
Swiss-Prot No. : O14757
All Names: CHEK1, Chk1, kinase Chk1
All Sites: Human: Ser345; Mouse: Ser345; Rat: Ser345
Form of Antibody: Rabbit IgG in phosphate buffered saline (without Mg^{2+} and Ca^{2+}), pH 7.4, 150mM NaCl, 0.02% sodium azide and 50% glycerol.
Storage/Stability: Store at -20°C/1 year
Immunogen: The antiserum was produced against synthesized phosphopeptide derived from human Chk1 around the phosphorylation site of serine 345 (S-F-S^P-Q-P).
Purification: The antibody was affinity-purified from rabbit antiserum by affinity-chromatography using epitope-specific phosphopeptide. The antibody against non-phosphopeptide was removed by chromatography using non-phosphopeptide corresponding to the phosphorylation site.
Specificity/Sensitivity: Chk1 (phospho-Ser345) antibody detects endogenous levels of Chk1 only when phosphorylated at serine 345.
Reactivity: Human, Mouse, Rat
Applications: IHC: 1:50~1:100
References: Shiromizu T, et al. (2006) *Genes Cells* May: 11(5): 477-85.
Hang YW, et al. (2005) *Mol Cell*: 19(5): 607-18.
Lu X, et al. (2005) *Genes Dev*: 19(10): 1162-74.
Falck J, et al. (2005) *Nature*: 434(7033): 605-11.



P-Peptide

-

+

Immunohistochemical analysis of paraffin-embedded human breast carcinoma tissue using Chk1 (phospho-Ser345) antibody (E011121).

For Research Use Only