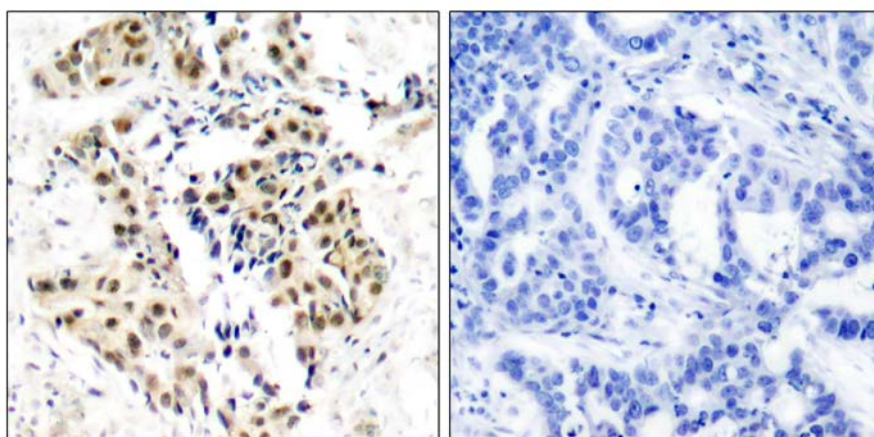




ATM (Phospho-Ser1981) Antibody

E011122

- Catalog Number:** E011122-1, E011122-2
Amount: 50µg/50µl, 100µg/100µl
Swiss-Prot No. : Q13315
All Names: A-T, mutated, Ataxia telangiectasia mutated, Ataxia telangiectasia mutated homolog, Serine-protein kinase ATM, kinase ATM
All Sites: Human: Ser1981; Mouse: Ser1987
Form of Antibody: Rabbit IgG in phosphate buffered saline (without Mg^{2+} and Ca^{2+}), pH 7.4, 150mM NaCl, 0.02% sodium azide and 50% glycerol.
Storage/Stability: Store at -20°C/1 year
Immunogen: The antiserum was produced against synthesized phosphopeptide derived from human ATM around the phosphorylation site of serine 1981 (E-G-S^P-Q-S).
Purification: The antibody was affinity-purified from rabbit antiserum by affinity-chromatography using epitope-specific phosphopeptide. The antibody against non-phosphopeptide was removed by chromatography using non-phosphopeptide corresponding to the phosphorylation site.
Specificity/Sensitivity: ATM (phospho-Ser1981) antibody detects endogenous levels of ATM only when phosphorylated at serine 1981.
Reactivity: Human, Mouse
Applications: IHC: 1:50~1:100
References: Gupta A. et al. (2005) Mol Cell Biol. 25(12): 5292-5305.
Bernstein JL. et al. (2002) Breast Cancer Res. 4(6): 249-252.
Silverman J. et al. (2004) Genes Dev. 18(17): 2108-2119.
Nakada D. et al. (2003) Nucleic Acids Res. 31(6): 1715-1724.



P-Peptide

-

+

Immunohistochemical analysis of paraffin-embedded human breast carcinoma tissue using ATM (phospho-Ser1981) antibody (E011122).

For Research Use Only