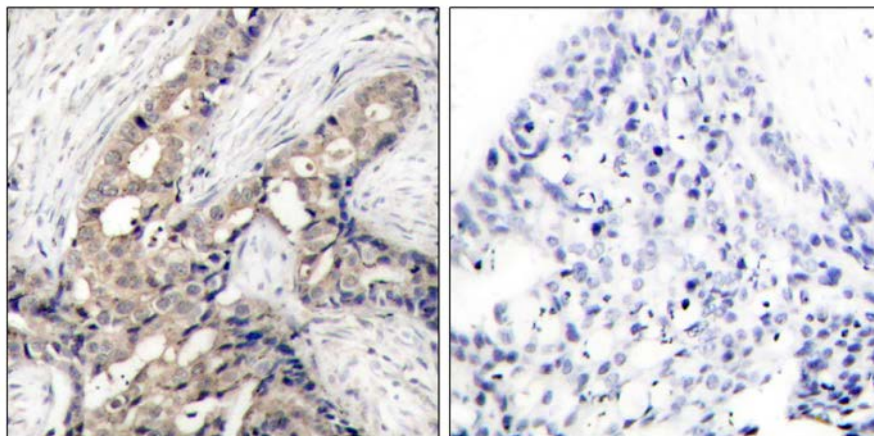




c-Abl (Phospho-Tyr412) Antibody

E011125

Catalog Number: E011125-1, E011125-2**Amount:** 50µg/50µl, 100µg/100µl**Swiss-Prot No. :** P00519**All Names:** c-ABL, ABL1, JTK7, Proto-oncogene tyrosine-protein kinase ABL1, p150**All Sites:** Human: Tyr412; Mouse: Tyr412**Form of Antibody:** Rabbit IgG in phosphate buffered saline (without Mg^{2+} and Ca^{2+}), pH 7.4, 150mM NaCl, 0.02% sodium azide and 50% glycerol.**Storage/Stability:** Store at -20°C/1 year**Immunogen:** The antiserum was produced against synthesized phosphopeptide derived from human c-Abl around the phosphorylation site of tyrosine 412 (D-T-Y^P-T-A).**Purification:** The antibody was affinity-purified from rabbit antiserum by affinity-chromatography using epitope-specific phosphopeptide. The antibody against non-phosphopeptide was removed by chromatography using non-phosphopeptide corresponding to the phosphorylation site.**Specificity/Sensitivity:** c-Abl (phospho-Tyr412) antibody detects endogenous levels of c-Abl only when phosphorylated at tyrosine 412.**Reactivity:** Human, Mouse**Applications:** IHC: 1:50~1:100**References:** Kawai H, et al. (2002) Mol Cell Biol 22(17): 6079-6088.
Vogt Sionov R, et al. (2001) Mol Cell Biol 21(17): 5869-5878.
Kharbanda S, et al. (2000) Mol Cell Biol 20(14): 4979-4989.
Yoshida K, et al. (2002) Mol Cell Biol 22(10): 3292-3300.

P-Peptide

-

+

Immunohistochemical analysis of paraffin-embedded human breast carcinoma tissue using c-Abl (phospho-Tyr412) antibody (E011125).

For Research Use Only