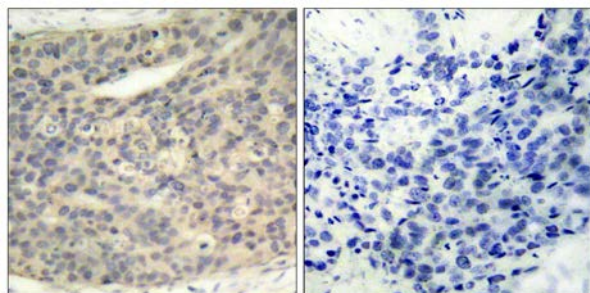




LIMK1 (Phospho-Thr508) Antibody

E011126

- Catalog Number:** E011126-1, E011126-2
- Amount:** 50µg/50µl, 100µg/100µl
- Form of Antibody:** Rabbit IgG in phosphate buffered saline (without Mg^{2+} and Ca^{2+}), pH 7.4, 150mM NaCl, 0.02% sodium azide and 50% glycerol.
- Storage/Stability:** Store at -20°C/1 year
- Immunogen:** The antiserum was produced against synthesized phosphopeptide derived from human LIMK1 around the phosphorylation site of threonine 508 (R-Y-T^P-V-V).
- Purification:** The antibody was affinity-purified from rabbit antiserum by affinity-chromatography using epitope-specific phosphopeptide. The antibody against non-phosphopeptide was removed by chromatography using non-phosphopeptide corresponding to the phosphorylation site.
- Specificity/Sensitivity:** LIMK1 (phospho-Thr508) antibody detects endogenous levels of LIMK1 only when phosphorylated at threonine 508.
- Reactivity:** Human, Mouse, Rat
- Applications:** WB: 1:500~1000 IHC: 1:50~1:100
- Swiss-Prot No. :** P53667
- References:** Soosairajah J, et al. (2005) EMBO J.
Ohashi K, et al. (2000) J Biol Chem; 275(5): 3577-82.
Edwards DC, et al. (1999) Nat Cell Biol; 1(5): 253-9.

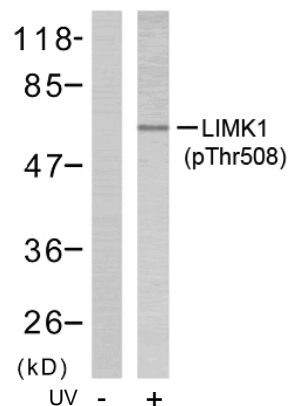


P-Peptide

-

+

Immunohistochemical analysis of paraffin- embedded human breast carcinoma tissue, using LIMK1 (phospho-Thr508) antibody (E011126).



Western blot analysis of extract from NIH/3T3 cells treated or untreated with UV (60min), using LIMK1 (phospho-Thr508) antibody (E011126).

For Research Use Only