



LIMK2 (Phospho-Thr505) Antibody

E011127

Catalog Number: E011127-1, E011127-2

Amount: 50µg/50µl, 100µg/100µl

Form of Antibody: Rabbit IgG in phosphate buffered saline (without Mg²⁺ and Ca²⁺), pH 7.4, 150mM NaCl, 0.02% sodium azide and 50% glycerol.

Storage/Stability: Store at -20°C/1 year

Immunogen: The antiserum was produced against synthesized phosphopeptide derived from human LIMK2 around the phosphorylation site of threonine 505 (R-Y-T^P-V-V).

Purification: The antibody was affinity-purified from rabbit antiserum by affinity-chromatography using epitope-specific phosphopeptide. The antibody against non-phosphopeptide was removed by chromatography using non-phosphopeptide corresponding to the phosphorylation site.

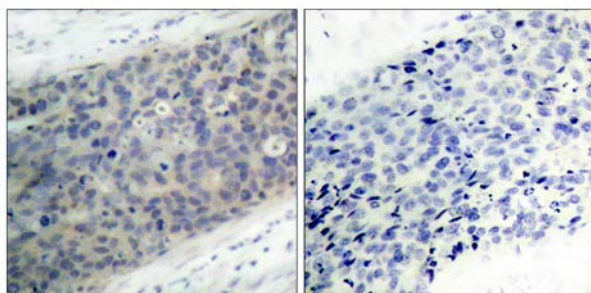
Specificity/Sensitivity: LIMK2 (phospho-Thr505) antibody detects endogenous levels of LIMK2 only when phosphorylated at threonine 505.

Reactivity: Human, Mouse, Rat

Applications: WB: 1:500~1000 IHC: 1:50~1:100

Swiss-Prot No. : P53671

References: Soosairajah J, et al. (2005) EMBO J.
Ohashi K, et al. (2000) J Biol Chem; 275(5): 3577-82.
Edwards DC, et al. (1999) Nat Cell Biol; 1(5): 253-9.

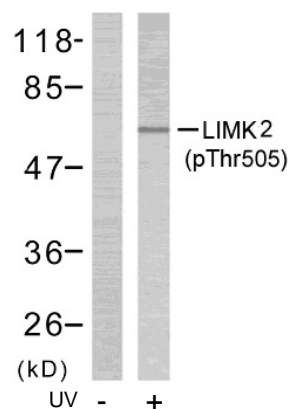


P-Peptide

-

+

Immunohistochemical analysis of paraffin- embedded human breast carcinoma tissue using LIMK2 (phospho-Thr505) antibody (E011127).



Western blot analysis of extract from NIH/3T3 cells treated or untreated with UV (60min), using LIMK2 (phospho-Thr505) antibody (E011127).

For Research Use Only