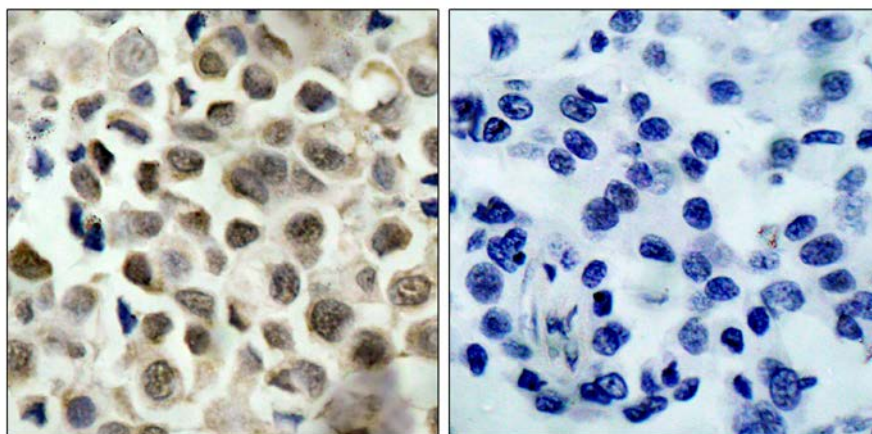




## HDAC8 (Phospho-Ser39) Antibody

E011128

- Catalog Number:** E011128-1, E011128-2  
**Amount:** 50µg/50µl, 100µg/100µl  
**Form of Antibody:** Rabbit IgG in phosphate buffered saline (without  $Mg^{2+}$  and  $Ca^{2+}$ ), pH 7.4, 150mM NaCl, 0.02% sodium azide and 50% glycerol.  
**Storage/Stability:** Store at -20°C/1 year  
**Immunogen:** The antiserum was produced against synthesized phosphopeptide derived from human HDAC8 around the phosphorylation site of serine 39 (R-A-S<sup>P</sup>-M-V).  
**Purification:** The antibody was affinity-purified from rabbit antiserum by affinity-chromatography using epitope-specific phosphopeptide. The antibody against non-phosphopeptide was removed by chromatography using non-phosphopeptide corresponding to the phosphorylation site.  
**Specificity/Sensitivity:** HDAC8 (phospho-Ser39) antibody detects endogenous levels of HDAC8 only when phosphorylated at serine 39.  
**Reactivity:** Human, Mouse, Rat  
**Applications:** IHC: 1:50~1:100  
**Swiss-Prot No. :** Q9BY41  
**References:** Lee H, et al. (2004) Mol Cell Biol. 24(2): 765-773.



P-Peptide

-

+

Immunohistochemical analysis of paraffin-embedded human lung carcinoma tissue, using HDAC8 (phospho-Ser39) antibody (E011128).

**For Research Use Only**