



Rb (Phospho-Ser795) Antibody

E011130

Catalog Number: E011130-1, E011130-2

Amount: 50µg/50µl, 100µg/100µl

Form of Antibody: Rabbit IgG in phosphate buffered saline (without Mg^{2+} and Ca^{2+}), pH 7.4, 150mM NaCl, 0.02% sodium azide and 50% glycerol.

Storage/Stability: Store at -20°C/1 year

Immunogen: The antiserum was produced against synthesized phosphopeptide derived from human Rb around the phosphorylation site of serine 795 (P-S-S^P-P-L).

Purification: The antibody was affinity-purified from rabbit antiserum by affinity-chromatography using epitope-specific phosphopeptide. The antibody against non-phosphopeptide was removed by chromatography using non-phosphopeptide corresponding to the phosphorylation site.

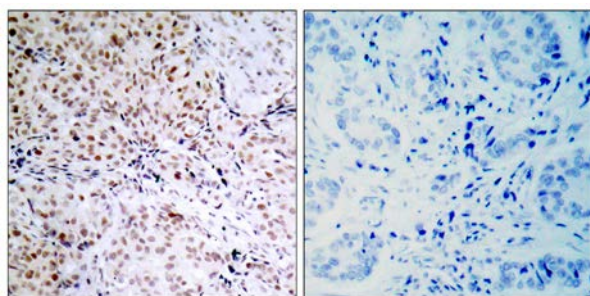
Specificity/Sensitivity: Rb (phospho-Ser795) antibody detects endogenous levels of Rb only when phosphorylated at serine 795.

Reactivity: Human, Mouse, Rat

Applications: WB: 1:500~1:1000 IHC: 1:50~1:100

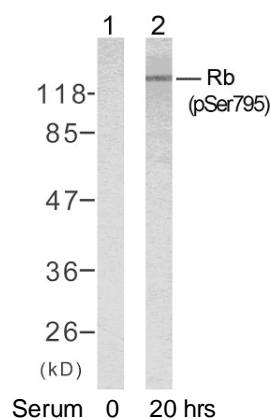
Swiss-Prot No. : P06400

References: Rubin SM, et al. (2005) Cell.123 (6): 1093-1106.
Wallick CJ, et al. (2005) Oncogene.24 (36): 5606-5618.
Leibundgut K, et al. (2005) Stem Cells. 23(7):1002-1011.
Roesch A, et al. (2005) Mod Pathol.18 (4): 565-572.



P-Peptide - +

Immunohistochemical analysis of paraffin-embedded human breast carcinoma tissue, using Rb (phospho-Ser795) antibody (E011130).



Western blot analysis of extracts from K562 cells untreated or treated with 10% serum after 48 hours of starvation, using Rb (phospho-Ser795) antibody (E011130).

For Research Use Only