



FKHR (Phospho-Ser319) Antibody

E011136

Catalog Number: E011136-1, E011136-2,

Amount: 50µg/50µl, 100µg/100µl,

Swiss-Prot No. : Q12778

All Names: FKHR, FOXO1, Forkhead box protein O1A, Forkhead in rhabdomyosarcoma

All Sites: Human: Ser319; Mouse: Ser316; Rat: Ser313

Form of Antibody: Rabbit IgG in phosphate buffered saline (without Mg^{2+} and Ca^{2+}), pH 7.4, 150mM NaCl, 0.02% sodium azide and 50% glycerol.

Storage/Stability: Store at -20°C/1 year

Immunogen: The antiserum was produced against synthesized phosphopeptide derived from human FKHR around the phosphorylation site of serine 319 (T-S-S^P-N-A).

Purification: The antibody was affinity-purified from rabbit antiserum by affinity-chromatography using epitope-specific phosphopeptide. The antibody against non-phosphopeptide was removed by chromatography using non-phosphopeptide corresponding to the phosphorylation site.

Specificity/Sensitivity: FKHR (phospho-Ser319) antibody detects endogenous levels of FKHR only when phosphorylated at serine 319.

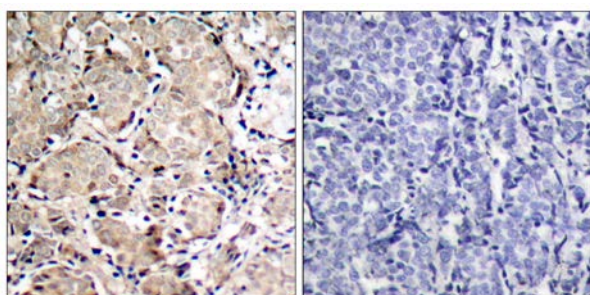
Reactivity: Human, Mouse, Rat

Applications: WB: 1:500~1:1000 IHC: 1:50~1:100

References: Rena G, et al. (2002) EMBO J 21(9): 2263-2271.

Woods YL, et al. (2001) Biochem J 355(Pt 3): 597-607.

Rena G, et al. (2001) Biochem J 354(Pt 3): 605-612.

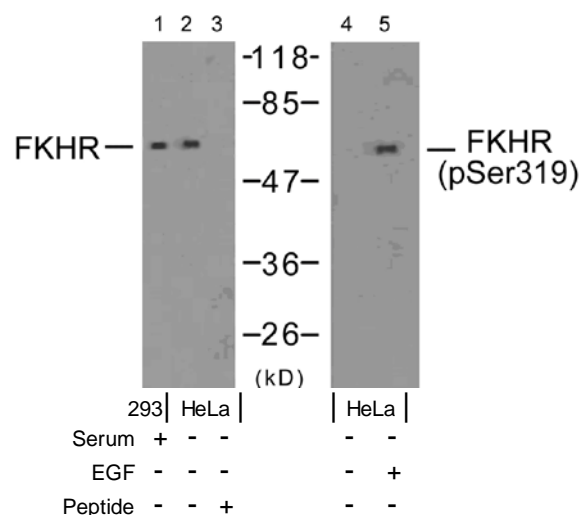


P-Peptide

-

+

Immunohistochemical analysis of paraffin-embedded human breast carcinoma tissue using FKHR (phospho-Ser319) antibody (E011136).



Western blot analysis of extracts from 293 cells (10% serum-treated, 15min) and HeLa cells (EGF-treated, 200ng/ml, 15min), using FKHR (Ab-319) antibody (E021161, Lane 1, 2 and 3) and FKHR (phospho-Ser319) antibody (E011136, Lane 4 and 5).

For Research Use Only