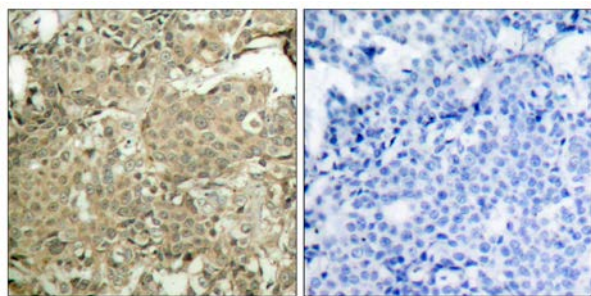




cofilin (Phospho-Ser3) Antibody

E011139

- Catalog Number:** E011139-1, E011139-2
- Amount:** 50µg/50µl, 100µg/100µl
- Form of Antibody:** Rabbit IgG in phosphate buffered saline (without Mg^{2+} and Ca^{2+}), pH 7.4, 150mM NaCl, 0.02% sodium azide and 50% glycerol.
- Storage/Stability:** Store at -20°C/1 year
- Immunogen:** The antiserum was produced against synthesized phosphopeptide derived from human cofilin around the phosphorylation site of serine 3 (M-A-S^P-G-V).
- Purification:** The antibody was affinity-purified from rabbit antiserum by affinity-chromatography using epitope-specific phosphopeptide. The antibody against non-phosphopeptide was removed by chromatography using non-phosphopeptide corresponding to the phosphorylation site.
- Specificity/Sensitivity:** cofilin (phospho-Ser3) antibody detects endogenous levels of cofilin only when phosphorylated at serine 3.
- Reactivity:** Human, Mouse, Rat
- Applications:** WB: 1:500~1:1000 IHC: 1:50~1:100
- Swiss-Prot No.:** P23528
- References:** Kobayashi M, et al. (2006) EMBO J 25(4): 713-26.
Wang Y, et al. (2005) Biol Chem 280(13): 12683-9.
Smith-Beckerman DM, et al. (2005) Mol Cell Proteomics: 156-68.

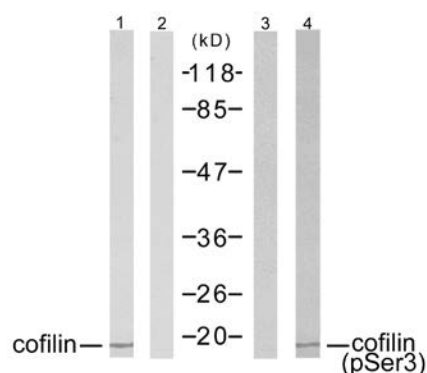


P-Peptide

-

+

Immunohistochemical analysis of paraffin-embedded human breast carcinoma tissue using cofilin (phospho-Ser3) antibody (E011139).



Western blot analysis of extracts from COLO205 cells using cofilin (Ab-1022) antibody (E021164, Lane 1 and 2) and cofilin (phospho-Ser3) antibody (E011139, Lane 3 and 4).

For Research Use Only