



CHK1 (Phospho-Ser280) Antibody

E011140

Catalog Number: E011140-1, E011140-2

Amount: 50µg/50µl, 100µg/100µl

Form of Antibody: Rabbit IgG in phosphate buffered saline (without Mg^{2+} and Ca^{2+}), pH 7.4, 150mM NaCl, 0.02% sodium azide and 50% glycerol.

Storage/Stability: Store at -20°C/1 year

Immunogen: The antiserum was produced against synthesized phosphopeptide derived from human CHK1 around the phosphorylation site of serine 280 (V-T-S^P-G-G).

Purification: The antibody was affinity-purified from rabbit antiserum by affinity-chromatography using epitope-specific phosphopeptide. The antibody against non-phosphopeptide was removed by chromatography using non-phosphopeptide corresponding to the phosphorylation site.

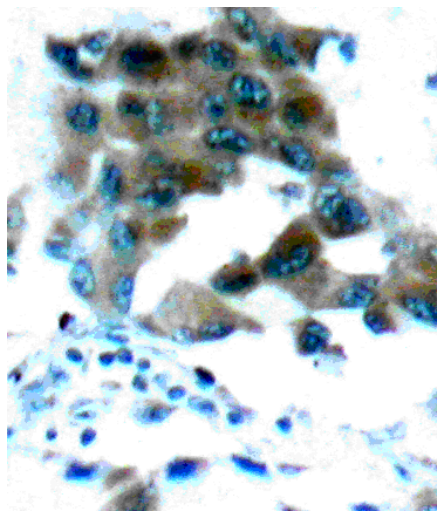
Specificity/Sensitivity: CHK1 (Phospho-Ser280) antibody detects endogenous levels of CHK1 only when phosphorylated at serine 280.

Reactivity: Human

Applications: WB: 1:500~1:1000 IHC: 1:50~1:100 ELISA: 1:4000

Swiss-Prot No. : O14757

References: Dephore N, et al. (2008) Proc Natl Acad Sci U S A 105, 10762-7.
Jean C, et al. (2007) J Invest Dermatol. 127(10):2418-24



Immunohistochemical analysis of paraffin-embedded human lung adenocarcinoma tissue using CHK1 (Phospho-Ser280) Antibody (E011140).

For Research Use Only