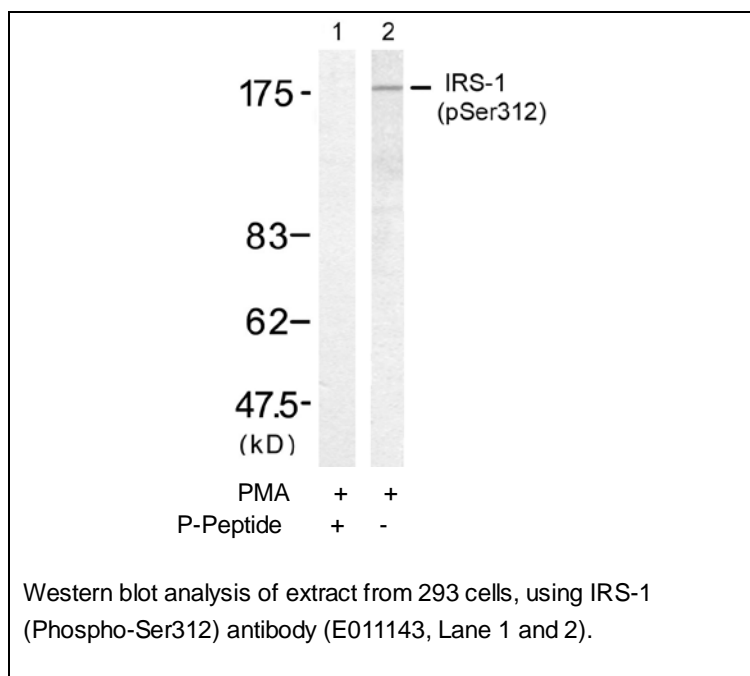




## IRS-1(Phospho-Ser312) Antibody

E011143

- Catalog Number:** E011143-1, E011143-2
- Amount:** 50µg/50µl, 100µg/100µl
- Swiss-Prot No. :** P35568
- Form of Antibody:** Rabbit IgG in phosphate buffered saline (without  $Mg^{2+}$  and  $Ca^{2+}$ ), pH 7.4, 150mM NaCl, 0.02% sodium azide and 50% glycerol.
- Storage/Stability:** Store at -20°C/1 year
- Immunogen:** The antiserum was produced against synthesized phosphopeptide derived from human IRS-1 around the phosphorylation site of serine 312 (A-T-S<sup>P</sup>-P-A).
- Purification:** The antibody was affinity-purified from rabbit antiserum by affinity-chromatography using epitope-specific phosphopeptide. The antibody against non-phosphopeptide was removed by chromatography using non-phosphopeptide corresponding to the phosphorylation site.
- Specificity/Sensitivity:** IRS-1(Phospho-Ser312) antibody detects endogenous levels of IRS-1 only when phosphorylated at serine 312.
- Reactivity:** Human, Mouse, Rat
- Applications:** WB: 1:500~1:1000
- References:** Tzatsos A, et al. (2006) Mol Cell Biol; 26(1): 63-76  
Ozes ON, et al. (2001) Proc Natl Acad Sci U S A; 98(8): 4640-4645  
Szanto I, et al. (2000) Proc Natl Acad Sci U S A; 97(5): 2355-2360  
Ozes ON, et al. (2001) Proc Natl Acad Sci U S A; 98(8): 4640-4645



**For Research Use Only**