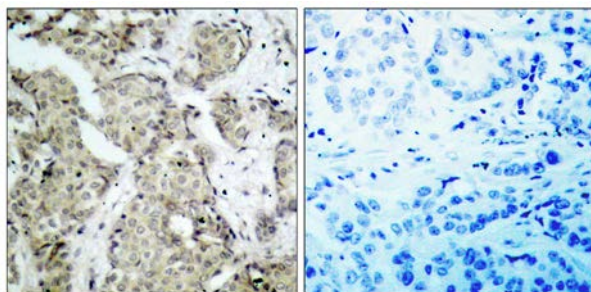




MKK6 (Phospho-Ser207) Antibody

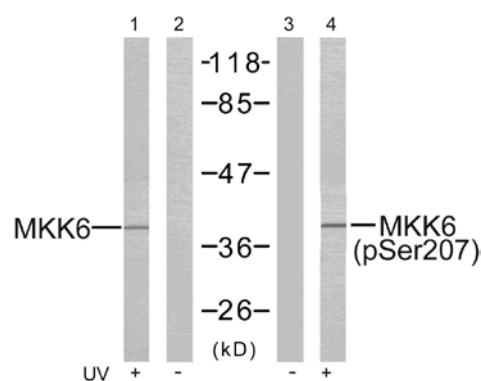
E011146

- Catalog Number:** E011146-1, E011146-2
- Amount:** 50µg/50µl, 100µg/100µl
- Form of Antibody:** Rabbit IgG in phosphate buffered saline (without Mg^{2+} and Ca^{2+}), pH 7.4, 150mM NaCl, 0.02% sodium azide and 50% glycerol.
- Storage/Stability:** Store at -20°C/1 year
- Immunogen:** The antiserum was produced against synthesized phosphopeptide derived from human MKK6 around the phosphorylation site of serine 207 (V-D-S^P-V-A).
- Purification:** The antibody was affinity-purified from rabbit antiserum by affinity-chromatography using epitope-specific phosphopeptide. The antibody against non-phosphopeptide was removed by chromatography using non-phosphopeptide corresponding to the phosphorylation site.
- Specificity/Sensitivity:** MKK6 (phospho-Ser207) antibody detects endogenous levels of MKK6 only when phosphorylated at serine207.
- Reactivity:** Human, Rat
- Applications:** WB: 1:500~1:1000 IHC: 1:50~1:100 IF: 1:100-200
- Swiss-Prot No. :** P52564
- References:** Wang W, et al. (2002) Mol Cell Biol ; 22(10): 3389-403.
Raingeaud J, et al. (1996) Mol Cell Biol; 16(3): 1247-55.



P-Peptide - +

Immunohistochemical analysis of paraffin- embedded human breast carcinoma tissue, using MKK6 (phospho-Ser207) antibody (E011146).



Western blot analysis of extract from MDA-MB-435 cells untreated or treated with UV, using MKK6 (Ab-207) antibody (E021153, Lane 1 and 2) and MKK6 (phospho-Ser207) antibody (E011146, Lane 3 and 4).

For Research Use Only