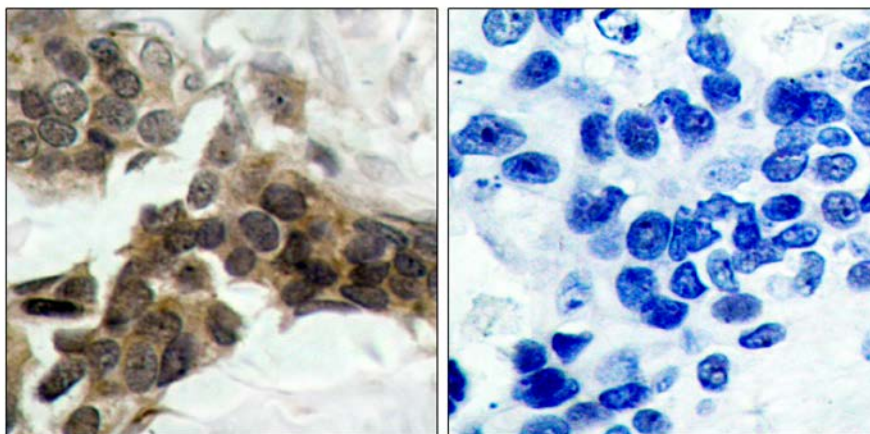




I κ B- α (Phospho-Ser32/Ser36) Antibody

E011152

- Catalog Number:** E011152-1, E011152-2
- Amount:** 50 μ g/50 μ l, 100 μ g/100 μ l
- Form of Antibody:** Rabbit IgG in phosphate buffered saline (without Mg²⁺ and Ca²⁺), pH 7.4, 150mM NaCl, 0.02% sodium azide and 50% glycerol.
- Storage/Stability:** Store at -20°C/1 year
- Immunogen:** The antiserum was produced against synthesized phosphopeptide derived from human I κ B- α around the phosphorylation site of serine 32/36 (H-D-S^P-G-L-D-S^P-M-K).
- Purification:** The antibody was affinity-purified from rabbit antiserum by affinity-chromatography using epitope-specific phosphopeptide. The antibody against non-phosphopeptide was removed by chromatography using non-phosphopeptide corresponding to the phosphorylation site.
- Specificity/Sensitivity:** I κ B- α (phospho-Ser32/Ser36) antibody detects endogenous levels of I κ B- α only when phosphorylated at serine 32/36.
- Reactivity:** Human, Mouse, Rat
- Applications:** IHC: 1:50~1:100
- Swiss-Prot No. :** P25963
- References:** Shieh, S. Y. et al. (1999) *EMBO J.* 18, 1815-1823.
Honda, R. et al. (1997) *FEBS Lett.* 420, 25-27.
Hirao, A. et al. (2000) *Science* 287, 1824-1827.
Tibbetts, R. S. et al. (1999) *Genes Dev.* 13, 152-157.
Chehab, N.H. et al. (1999) *Proc. Natl. Acad. Sci. USA* 96, 13777-13782.



P-Peptide

-

+

Immunohistochemical analysis of paraffin-embedded human breast carcinoma tissue, using I κ B- α (phospho-Ser32/Ser36) antibody (E011152).

For Research Use Only