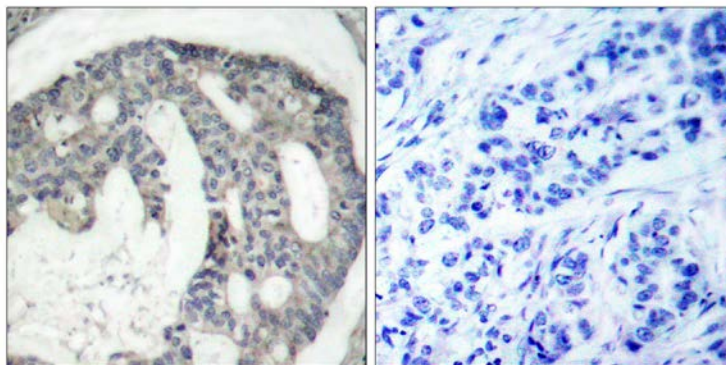




eNOS (Phospho-Ser1176) Antibody

E011156

- Catalog Number:** E011156-1, E011156-2
- Amount:** 50µg/50µl, 100µg/100µl
- Swiss-Prot No. :** P29474
- Form of Antibody:** Rabbit IgG in phosphate buffered saline (without Mg^{2+} and Ca^{2+}), pH 7.4, 150mM NaCl, 0.02% sodium azide and 50% glycerol.
- Storage/Stability:** Store at -20°C/1 year
- Immunogen:** The antiserum was produced against synthesized phosphopeptide derived from human eNOS around the phosphorylation site of serine 1176 (T-Q-S^P-F-S).
- Purification:** The antibody was affinity-purified from rabbit antiserum by affinity-chromatography using epitope-specific phosphopeptide. The antibody against non-phosphopeptide was removed by chromatography using non-phosphopeptide corresponding to the phosphorylation site.
- Specificity/Sensitivity:** eNOS (phospho-Ser1176) antibody detects endogenous levels of eNOS only when phosphorylated at serine 1176.
- Reactivity:** Human, Mouse, Rat
- Applications:** IHC: 1:50~1:100
- References:** Fulton, D. et al. (1999) Nature 399, 597-601.
Harris, M.B. et al. (2001) J. Biol. Chem. 276, 16587-16591.
Thomas, S.R. et al. (2002) J. Biol. Chem. 277, 6017-6024.



P-Peptide

-

+

Immunohistochemical analysis of paraffin-embedded human breast carcinoma tissue using eNOS (phospho-Ser1176) antibody (E011156).

For Research Use Only