



FKHRL1 (Phospho-Ser253) Antibody

E011157

Catalog Number: E011157-1, E011157-2

Amount: 50µg/50µl, 100µg/100µl

Form of Antibody: Rabbit IgG in phosphate buffered saline (without Mg^{2+} and Ca^{2+}), pH 7.4, 150mM NaCl, 0.02% sodium azide and 50% glycerol.

Storage/Stability: Store at -20°C/1 year

Immunogen: The antiserum was produced against synthesized phosphopeptide derived from human FKHRL1 around the phosphorylation site of serine 253 (A-V-S^P-M-D).

Purification: The antibody was affinity-purified from rabbit antiserum by affinity-chromatography using epitope-specific phosphopeptide. The antibody against non-phosphopeptide was removed by chromatography using non-phosphopeptide corresponding to the phosphorylation site.

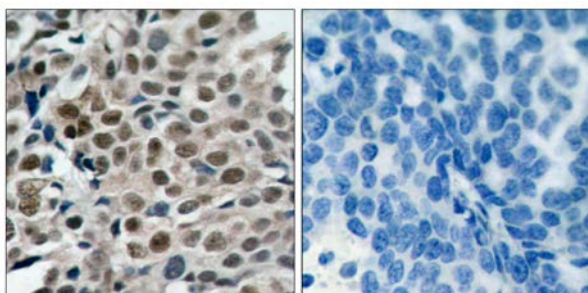
Specificity/Sensitivity: FKHRL1 (phospho-Ser253) antibody detects endogenous levels of FKHRL1 only when phosphorylated at serine 253.

Reactivity: Human, Mouse, Rat

Applications: WB: 1:500~1:1000 IHC: 1:50~1:100

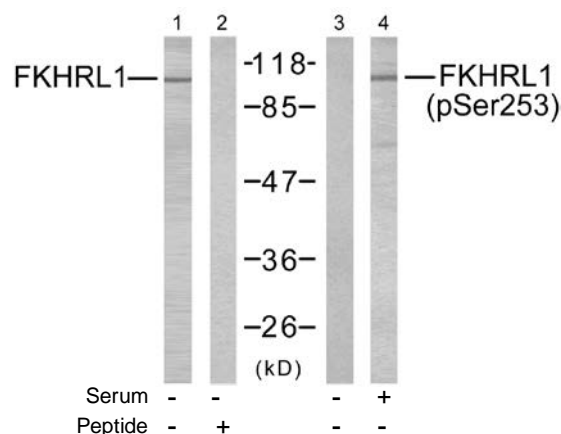
Swiss-Prot No. : O43524

References: Smith WW, et al. (2005) J Cell Biol; 169(2): 331-9.
Essafi A, et al. (2005) Oncogene; 24(14): 2317-29.
Brunet A, et al. (2001) Mol Cell Biol; 21(3): 952-65.
Brunet A, et al. (1999) Cell; 96(6): 857-68.



P-Peptide - +

Immunohistochemical analysis of paraffin-embedded human breast carcinoma tissue using FKHRL1 (phospho-Ser253) antibody (E011157).



Western blot analysis of extracts from NIH/3T3 cells using FKHRL1 (Ab-253) antibody (E021171, Lane 1 and 2) and FKHRL1 (phospho-Ser253) antibody (E011157, Lane 3 and 4).

For Research Use Only