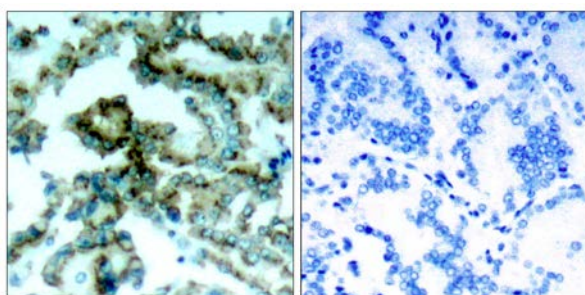




## PKC $\beta$ (Phospho-Thr641) Antibody

E011172

- Catalog Number:** E011172-1, E011172-2
- Amount:** 50 $\mu$ g/50 $\mu$ l, 100 $\mu$ g/100 $\mu$ l
- Swiss-Prot No. :** P05771
- Form of Antibody:** Rabbit IgG in phosphate buffered saline (without Mg<sup>2+</sup> and Ca<sup>2+</sup>), pH 7.4, 150mM NaCl, 0.02% sodium azide and 50% glycerol.
- Storage/Stability:** Store at -20°C/1 year
- Immunogen:** The antiserum was produced against synthesized phosphopeptide derived from human PKC $\beta$  around the phosphorylation site of threonine 641 (E-L-T<sup>P</sup>-P-T).
- Purification:** The antibody was affinity-purified from rabbit antiserum by affinity-chromatography using epitope-specific phosphopeptide. The antibody against non-phosphopeptide was removed by chromatography using non-phosphopeptide corresponding to the phosphorylation site.
- Specificity/Sensitivity:** PKC $\beta$  (phospho-Thr641) antibody detects endogenous levels of PKC $\beta$  only when phosphorylated at threonine 641.
- Reactivity:** Human, Mouse, Rat
- Applications:** WB: 1:500~1:1000 IHC: 1:50-1:100
- References:** Zhang Y, et al. (2006) Mol Cell Biol ; 26: 6748-6761  
Castoria G, et al. (2004) Mol Cell Biol ; 24: 7643-7653  
Marcil J, et al. (1999) Biochem J ; 337:185-192  
Bornancin F, et al. (1996) Curr Biol ; 6:1114-1123.

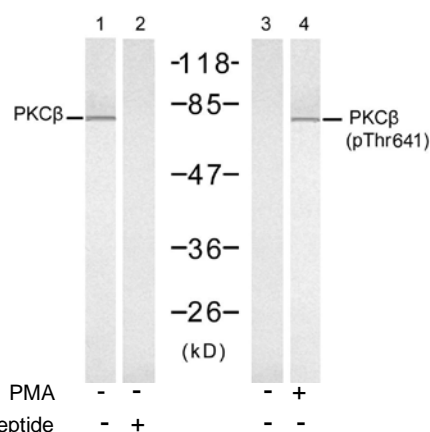


P-Peptide

-

+

Immunohistochemical analysis of paraffin-embedded human lung carcinoma tissue, using PKC $\beta$  (phospho-Thr641) antibody (E011172).



Western blot analysis of extracts from K562 cells, untreated or treated with PMA (1ng/ml, 10min), using PKC $\beta$  (Ab-641) antibody (E021184, Lane 1 and 2) and PKC $\beta$  (phospho-Thr641) antibody (E011172, Lane 3 and 4).

**For Research Use Only**