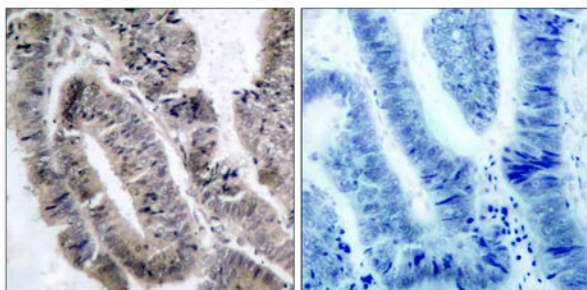




## AMPK1/AMPK2 (Phospho-Ser485/Ser491) Antibody

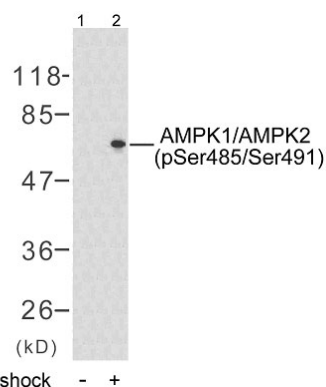
E011174

- Catalog Number:** E011174-1, E011174-2
- Amount:** 50µg/50µl, 100µg/100µl
- Form of Antibody:** Rabbit IgG in phosphate buffered saline (without  $Mg^{2+}$  and  $Ca^{2+}$ ), pH 7.4, 150mM NaCl, 0.02% sodium azide and 50% glycerol.
- Storage/Stability:** Store at -20°C/1 year
- Immunogen:** The antiserum was produced against synthesized phosphopeptide derived from human AMPK1/AMPK2 around the phosphorylation site of serine 485/491 (S-G- S<sup>P</sup>-V-S).
- Purification:** The antibody was affinity-purified from rabbit antiserum by affinity-chromatography using epitope-specific phosphopeptide. The antibody against non-phosphopeptide was removed by chromatography using non-phosphopeptide corresponding to the phosphorylation site.
- Specificity/Sensitivity:** AMPK1/AMPK2 (phospho-Ser485/Ser491) antibody detects endogenous levels of AMPK1/AMPK2 only when phosphorylated at serine 485 or serine 491.
- Reactivity:** Human, Mouse, Rat
- Applications:** WB: 1:500~1:1000 IHC: 1:50~1:100
- Swiss-Prot No. :** Q13131 P54646
- References:** Kim JE, et al. (2005) J Proteome Res. 4(4): 1339-1346.  
Woods A, et al. (2003) J Biol Chem. 278(31): 28434-28442.



P-Peptide                      -                      +

Immunohistochemical analysis of paraffin- embedded human colon carcinoma tissue, using AMPK1/AMPK2 (phospho-Ser485/Ser491) antibody (E011174).



Western blot analysis of extract from HeLa cells untreated or treated with heat shock (30min), using AMPK1/AMPK2 (phospho-Ser485/Ser491) antibody (E011174).

**For Research Use Only**