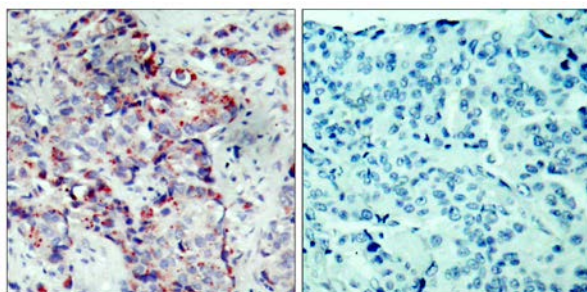




SEK1/MKK4 (Phospho-Ser80) Antibody

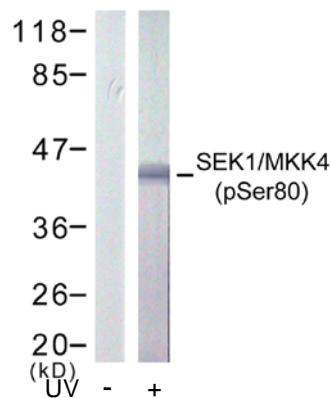
E011177

- Catalog Number:** E011177-1, E011177-2
Amount: 50µg/50µl, 100µg/100µl
Form of Antibody: Rabbit IgG in phosphate buffered saline (without Mg^{2+} and Ca^{2+}), pH 7.4, 150mM NaCl, 0.02% sodium azide and 50% glycerol.
Storage/Stability: Store at -20°C/1 year
Immunogen: The antiserum was produced against synthesized phosphopeptide derived from human SEK1/MKK4 around the phosphorylation site of serine 80 (T-H-S^P-I-E).
Purification: The antibody was affinity-purified from rabbit antiserum by affinity-chromatography using epitope-specific phosphopeptide. The antibody against non-phosphopeptide was removed by chromatography using non-phosphopeptide corresponding to the phosphorylation site.
Specificity/Sensitivity: SEK1/MKK4 (phospho-Ser80) antibody detects endogenous levels of SEK1/MKK4 only when phosphorylated at serine 80.
Reactivity: Human, Mouse, Rat
Applications: WB: 1:500~1:1000 IHC: 1:50~100
Swiss-Prot No. : P45985
References: Park HS, et al. (2002) J Biol Chem; 277(4): 2573-8.



P-Peptide - +

Immunohistochemical analysis of paraffin-embedded human breast carcinoma tissue, using SEK1/MKK4 (phospho-Ser80) antibody (E011177).



Western blot analysis of extract from 293 cells treated or untreated with UV, using SEK1/ MKK4 (phospho-Ser80) antibody (E011177).

For Research Use Only