



## ASK1 (Phospho-Ser83) Antibody

E011178

**Catalog Number:** E011178-1, E011178-2

**Amount:** 50µg/50µl, 100µg/100µl

**Form of Antibody:** Rabbit IgG in phosphate buffered saline (without  $Mg^{2+}$  and  $Ca^{2+}$ ), pH 7.4, 150mM NaCl, 0.02% sodium azide and 50% glycerol.

**Storage/Stability:** Store at -20°C/1 year

**Immunogen:** The antiserum was produced against synthesized phosphopeptide derived from human ASK1 around the phosphorylation site of serine 83 (G-S-S<sup>P</sup>-V-G).

**Purification:** The antibody was affinity-purified from rabbit antiserum by affinity-chromatography using epitope-specific phosphopeptide. The antibody against non-phosphopeptide was removed by chromatography using non-phosphopeptide corresponding to the phosphorylation site.

**Specificity/Sensitivity:** ASK1 (phospho-Ser83) antibody detects endogenous levels of ASK1 only when phosphorylated at serine 83.

**Reactivity:** Human

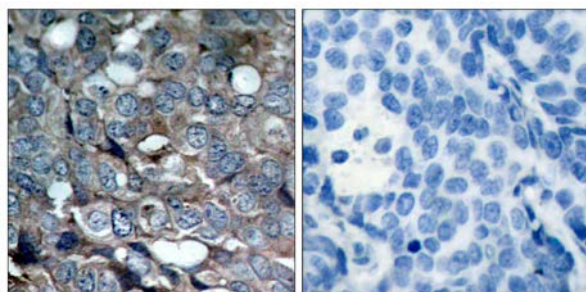
**Applications:** WB: 1:500~1:1000 IHC: 1:50~1:100

**Swiss-Prot No.:** Q99683

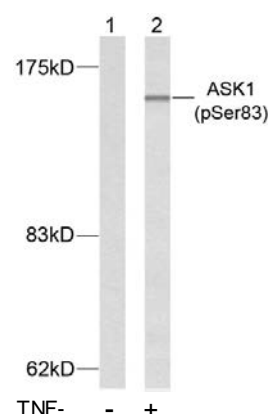
**References:** Mabuchi S, et al. (2004) Endocrinology. 145(1): 49-58.

Yuan ZQ, et al. (2003) J Biol Chem. 278(26): 23432-23440.

Kim AH, et al. (2001) Mol Cell Biol. 21(3): 893-901.



Immunohistochemical analysis of paraffin-embedded human breast carcinoma tissue using ASK1 (phospho-Ser83) antibody (E011178).



Western blot analysis of extracts from K562 cells using ASK1 (phospho-Ser83) antibody (E011178).