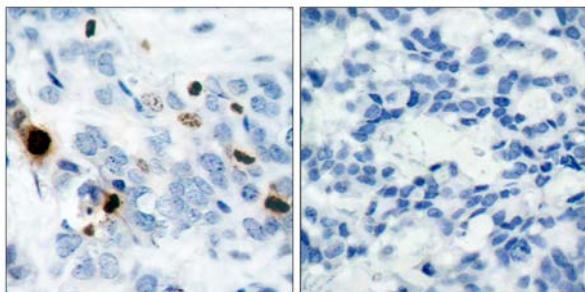




Histone H3.1 (Phospho-Ser10) Antibody

E011184

- Catalog Number:** E011184-1, E011184-2
- Amount:** 50µg/50µl, 100µg/100µl
- Form of Antibody:** Rabbit IgG in phosphate buffered saline (without Mg^{2+} and Ca^{2+}), pH 7.4, 150mM NaCl, 0.02% sodium azide and 50% glycerol.
- Storage/Stability:** Store at -20°C/1 year
- Immunogen:** The antiserum was produced against synthesized phosphopeptide derived from human Histone H3.1 around the phosphorylation site of serine 10 (R-K-S^P-T-G).
- Purification:** The antibody was affinity-purified from rabbit antiserum by affinity-chromatography using epitope-specific phosphopeptide. The antibody against non-phosphopeptide was removed by chromatography using non-phosphopeptide corresponding to the phosphorylation site.
- Specificity/Sensitivity:** Histone H3.1 (phospho-Ser10) antibody detects endogenous levels of Histone H3.1 only when phosphorylated at serine 10.
- Reactivity:** Human, Mouse, Rat
- Applications:** WB: 1:500~1:1000 IHC: 1:50~1:100 IF: 1:100-200
- Swiss-Prot No.:** P68431
- References:** Dai J, et al. (2005) Genes Dev 19(4): 472-488.
Yih LH, et al. (2005) Carcinogenesis 26(1): 53-63.

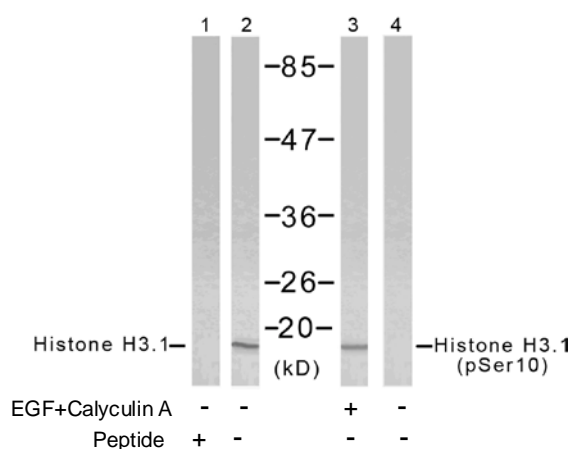


P-Peptide

-

+

Immunohistochemical analysis of paraffin-embedded human breast carcinoma tissue using Histone H3.1 (phospho-Ser10) antibody (E011184).



Western blot analysis of extract from HeLa cells using Histone H3.1 (Ab-10) antibody (E021137, Lane 1 and 2) and Histone H3.1 (phospho-Ser10) antibody (E011184, Lane 3 and 4).

For Research Use Only