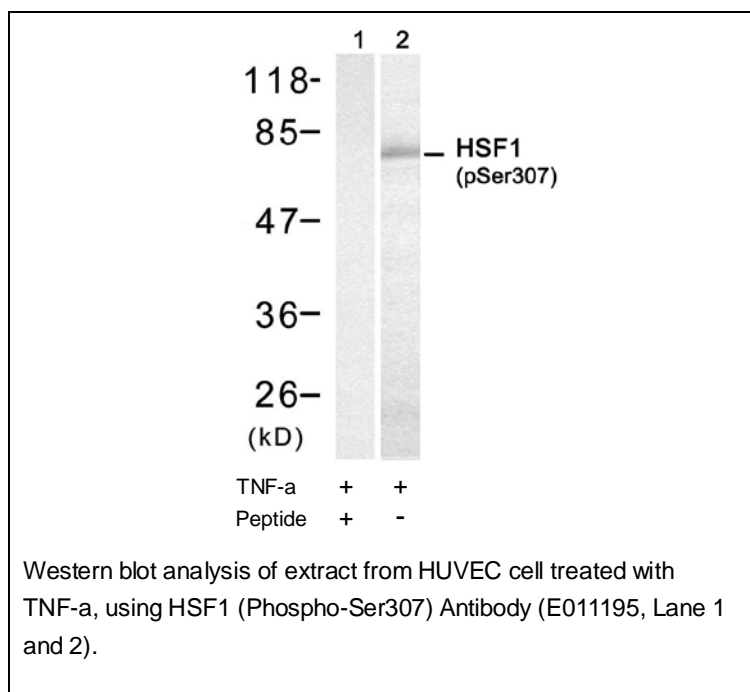




HSF1 (Phospho-Ser307) Antibody

E011195

- Catalog Number:** E011195-1, E011195-2
Amount: 50µg/50µl, 100µg/100µl
Swiss-Prot No. : Q00613
Form of Antibody: Rabbit IgG in phosphate buffered saline (without Mg^{2+} and Ca^{2+}), pH 7.4, 150mM NaCl, 0.02% sodium azide and 50% glycerol.
Storage/Stability: Store at -20°C/1 year
Immunogen: The antiserum was produced against synthesized phosphopeptide derived from human HSF1 around the phosphorylation site of serine 307 (P-Q-S^P-P-R).
Purification: The antibody was affinity-purified from rabbit antiserum by affinity-chromatography using epitope-specific phosphopeptide. The antibody against non-phosphopeptide was removed by chromatography using non-phosphopeptide corresponding to the phosphorylation site.
Specificity/Sensitivity: HSF1 (Phospho-Ser307) Antibody detects endogenous levels of HSF1 only when phosphorylated at serine 307.
Reactivity: Human
Applications: WB: 1:500~1:1000 IF: 1:100-200
References: Guettouche T, et al. (2005) BMC Biochem ; 6(1): 4
Wang X, et al. (2003) Mol Cell Biol ; 23(17): 6013-6026
Jolly C, et al. (1999) Proc Natl Acad Sci USA; 96(12): 6769-6774.



For Research Use Only