



SMC1 (Phospho-Ser957) Antibody

E011198

Catalog Number: E011198-1, E011198-2

Amount: 50µg/50µl, 100µg/100µl

Swiss-Prot No. : Q14683

All Names: Chromosome segregation protein SmcB, DXS423E, KIAA0178, SB1.8/DXS423E protein, SM1A, SMC1A, SMC1L1, SMC1alpha protein, Sb1.8, Structural maintenance of chromosome 1-like 1 protein

All Sites: Human: Ser957; Mouse: Ser957

Form of Antibody: Rabbit IgG in phosphate buffered saline (without Mg²⁺ and Ca²⁺), pH 7.4, 150mM NaCl, 0.02% sodium azide and 50% glycerol.

Storage/Stability: Store at -20°C/1 year

Immunogen: The antiserum was produced against synthesized phosphopeptide derived from human SMC1 around the phosphorylation site of serine 957 (G-S-S^P-Q-G).

Purification: The antibody was affinity-purified from rabbit antiserum by affinity-chromatography using epitope-specific phosphopeptide. The antibody against non-phosphopeptide was removed by chromatography using non-phosphopeptide corresponding to the phosphorylation site.

Specificity/Sensitivity: SMC1 (phospho-Ser957) antibody detects endogenous levels of SMC1 only when phosphorylated at serine 957.

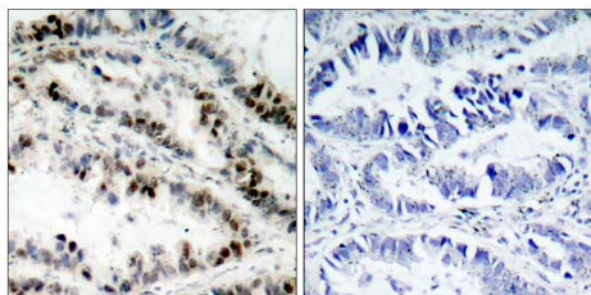
Reactivity: Human, Mouse

Applications: WB: 1:500~1:1000 IHC: 1:50-1:100

References: Yang XM. et al. (2004) Mol Cell Biol. 24(12): 5290-5303.

Kim ST. et al. (2002) Genes Dev. 16(5): 560-570.

Revenkova E. et al. (2001) Mol Cell Biol. 21(20): 6984-6998.

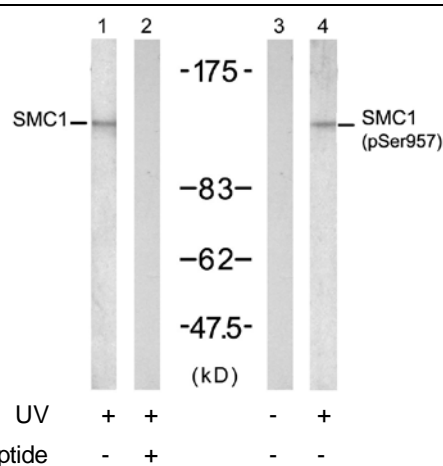


P-Peptide

-

+

Immunohistochemical analysis of paraffin-embedded human lung carcinoma tissue using SMC1 (phospho-Ser957) antibody (E011198).



Western blot analysis of extract from K562 cells, untreated or treated with UV (20min), using SMC1 (Ab-957) antibody (E021190, Lane 1 and 2) and SMC1 (phospho-Ser957) antibody (E011198, Lane 3 and 4).

For Research Use Only