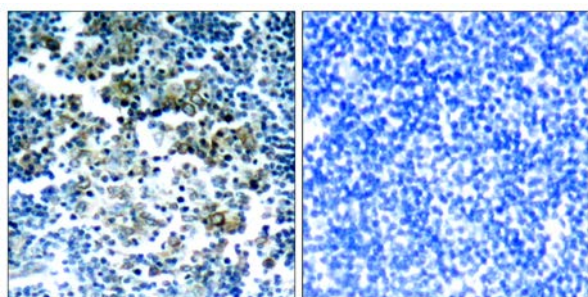




Bcr (Phospho-Tyr177) Antibody

E011199

- Catalog Number:** E011199-1, E011199-2
- Amount:** 50µg/50µl, 100µg/100µl
- Swiss-Prot No. :** P11274
- Form of Antibody:** Rabbit IgG in phosphate buffered saline (without Mg^{2+} and Ca^{2+}), pH 7.4, 150mM NaCl, 0.02% sodium azide and 50% glycerol.
- Storage/Stability:** Store at -20°C/1 year
- Immunogen:** The antiserum was produced against synthesized phosphopeptide derived from human Bcr around the phosphorylation site of tyrosine 177 (P-F-Y^P-V-N).
- Purification:** The antibody was affinity-purified from rabbit antiserum by affinity-chromatography using epitope-specific phosphopeptide. The antibody against non-phosphopeptide was removed by chromatography using non-phosphopeptide corresponding to the phosphorylation site.
- Specificity/Sensitivity:** Bcr (phospho-Tyr177) antibody detects endogenous levels of Bcr only when phosphorylated at tyrosine 177.
- Reactivity:** Human, Mouse
- Applications:** WB: 1:500~1:1000 IHC: 1:50~1:100
- References:** Sattler M, et al. Mol Cell Biol. 1999 Nov; 19(11): 7473-7480.
Li S et al. EMBO J. 2001 Dec 3; 20(23): 6793-6804.
Million RP, et.al. Mol Cell Biol. 2004 Jun; 24(11): 4685-4695.
Malcolm A. Meyn, et al. . Biol. Chem., Oct 2006; 281: 30907 – 30916.

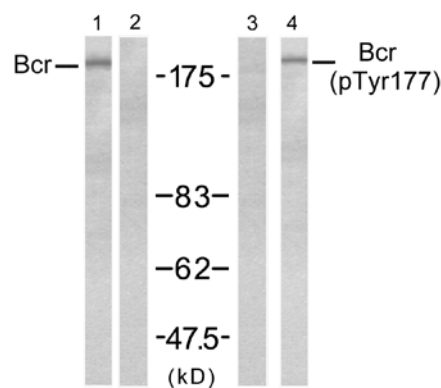


P-Peptide

-

+

Immunohistochemical analysis of paraffin-embedded human tonsil tumor tissue, using Bcr (phospho-Tyr177) antibody (E011199).



EGF - - + +
Peptide - + - -

Western blot analysis of extract from A431 cells, untreated or treated with EGF (200ng/ml, 5min), using Bcr (Ab-177) antibody (E021197, Lane 1 and 2) and Bcr(phospho-Tyr177) antibody (E011199, Lane 3 and 4).

For Research Use Only