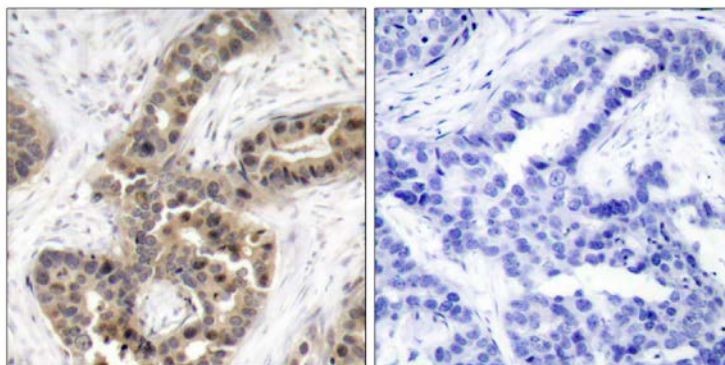




## p21Cip1 (Phospho-Thr145) Antibody

E011206

- Catalog Number:** E011206-1, E011206-2
- Amount:** 50µg/50µl, 100µg/100µl
- Swiss-Prot No. :** P38936
- Form of Antibody:** Rabbit IgG in phosphate buffered saline (without  $Mg^{2+}$  and  $Ca^{2+}$ ), pH 7.4, 150mM NaCl, 0.02% sodium azide and 50% glycerol.
- Storage/Stability:** Store at -20°C/1 year
- Immunogen:** The antiserum was produced against synthesized phosphopeptide derived from human p21Cip1 around the phosphorylation site of threonine 145 (R-Q-T<sup>P</sup>-S-M).
- Purification:** The antibody was affinity-purified from rabbit antiserum by affinity-chromatography using epitope-specific phosphopeptide. The antibody against non-phosphopeptide was removed by chromatography using non-phosphopeptide corresponding to the phosphorylation site.
- Specificity/Sensitivity:** p21Cip1 (phospho-Thr145) antibody detects endogenous levels of p21Cip1 only when phosphorylated at threonine 145.
- Reactivity:** Human
- Applications:** IHC: 1:50~1:100
- References:** Ocker M Int,et al. (2007)J Biochem Cell Biol. 39(7-8):1367-74.  
Dangi S, et al.(2006)Cell Prolif. 39(4):261-79.  
Chen J,et al.(2006)Am J Physiol Heart Circ Physiol. 290(4):H1575-86



P-Peptide

-

+

Immunohistochemical analysis of paraffin-embedded human breast carcinoma tissue using p21Cip1 (phospho-Thr145) antibody (E011206).

**For Research Use Only**