



Pyk2 (Phospho-Tyr402) Antibody

E011216

Catalog Number: E011216-1, E011216-2

Amount: 50µg/50µl, 100µg/100µl

Swiss-Prot No. : Q14289

Form of Antibody: Rabbit IgG in phosphate buffered saline (without Mg^{2+} and Ca^{2+}), pH 7.4, 150mM NaCl, 0.02% sodium azide and 50% glycerol.

Storage/Stability: Store at -20°C/1 year

Immunogen: The antiserum was produced against synthesized phosphopeptide derived from human Pyk2 around the phosphorylation site of tyrosine 402 (D-I-Y^P-A-E).

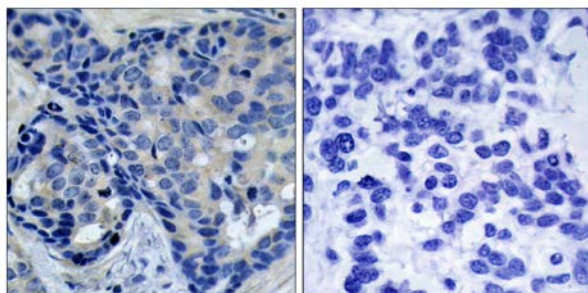
Purification: The antibody was affinity-purified from rabbit antiserum by affinity-chromatography using epitope-specific phosphopeptide. The antibody against non-phosphopeptide was removed by chromatography using non-phosphopeptide corresponding to the phosphorylation site.

Specificity/Sensitivity: Pyk2 (phospho-Tyr402) antibody detects endogenous levels of Pyk2 only when phosphorylated at tyrosine 402.

Reactivity: Human, Mouse, Rat

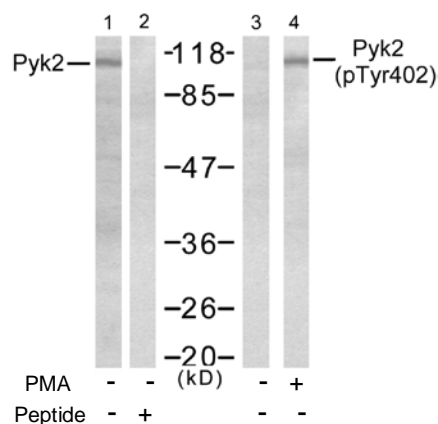
Applications: WB:1:500~1:1000 IHC: 1:50~1:100

References: Gluck SL, et al. (2004) J Clin Invest; 114(12): 1696-1699
Benzing T, et al. (2001) Proc Natl Acad Sci U S A; 98(17): 9784-9789
Tian D, et al. (2002) Mol Cell Biol; 22(8): 2650-2662
Lu Z, et al. (2001) Mol Cell Biol; 21(12): 4016-4031
Krishnan HH, et al. (2006) J Virol; 80(3): 1167-1180



P-Peptide - +

Immunohistochemical analysis of paraffin-embedded human breast carcinoma tissue, using Pyk2 (phospho-Tyr402) antibody (E011216).



Western blot analysis of extract from Jurkat cells, untreated or treated with PMA (1ng/ml, 5min), using Pyk2 (Ab-402) antibody (E021209, Lane 1 and 2) and Pyk2 (phospho-Tyr402) antibody (E011216, Lane 3 and 4).