



NF-κB p65 (Phospho-Ser529) Antibody

E011217

Catalog Number: E011217-1, E011217-2

Amount: 50µg/50µl, 100µg/100µl

Swiss-Prot No. : Q04206

All Names: NF-KB p65, NFKB3, Nuclear factor NF-kappa-B p65 subunit, RELA, TF65, Transcription factor p65, p65

All Sites: Human: Ser529; Mouse: Ser529; Rat: Ser529

Form of Antibody: Rabbit IgG in phosphate buffered saline (without Mg^{2+} and Ca^{2+}), pH 7.4, 150mM NaCl, 0.02% sodium azide and 50% glycerol.

Storage/Stability: Store at -20 °C/1 year

Immunogen: The antiserum was produced against synthesized phosphopeptide derived from human NF-κB p65 around the phosphorylation site of serine 529 (L-L-S^P-G-D).

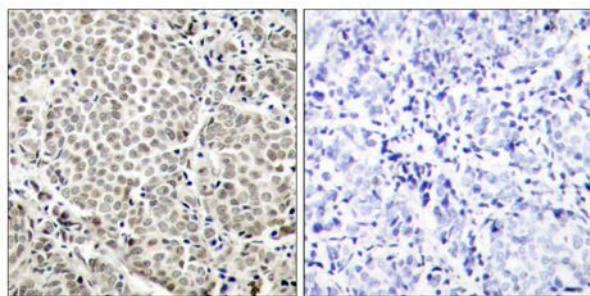
Purification: The antibody was affinity-purified from rabbit antiserum by affinity-chromatography using epitope-specific phosphopeptide. The antibody against non-phosphopeptide was removed by chromatography using non-phosphopeptide corresponding to the phosphorylation site.

Specificity/Sensitivity: NF-κB p65 (phospho-Ser529) antibody detects endogenous levels of NF-κB p65 protein only when phosphorylated at serine 529.

Reactivity: Human, Mouse, Rat

Applications: WB: 1:500~1:1000 IHC: 1:50~1:100

References: Xu C, et al (2005) Oncogene:24(28): 4486-95.
McNulty SE, et al. (2004) Pigment Cell Res Apr; 17(2): 173-80.
Madrid LV, et al. (2001) J Biol Chem: 276(22): 18934-40.
Wang D, et al. (2000) J Biol Chem : 275(42): 32592-7.

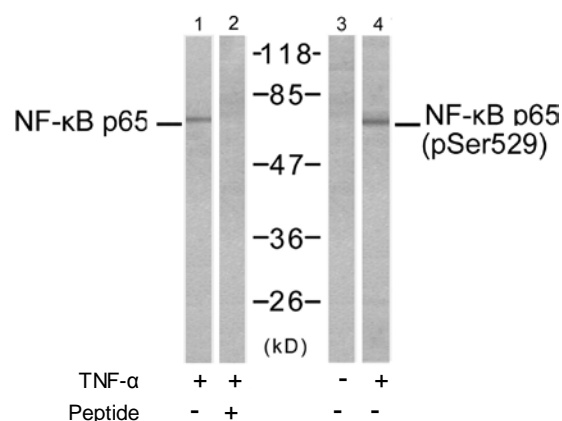


P-Peptide

-

+

Immunohistochemical analysis of paraffin-embedded human breast carcinoma tissue, using NF-κB p65 (Phospho-Ser529) antibody (E011217).



Western blot analysis of extracts from MDA-MB-231 cells, untreated or treated with TNF-α (20ng/ml, 10min) using NF-κB p65 (Ab-529) antibody (E021210, Line 1 and 2) and NF-κB p65 (phospho-Ser529) antibody (E011217, Line 3 and 4).

For Research Use Only