



β -Catenin (Phospho-Ser37) Antibody

E011219

Catalog Number: E011219-1, E011219-2

Amount: 50 μ g/50 μ l, 100 μ g/100 μ l

Swiss-Prot No. : P35222

Form of Antibody: Rabbit IgG in phosphate buffered saline (without Mg^{2+} and Ca^{2+}), pH 7.4, 150mM NaCl, 0.02% sodium azide and 50% glycerol.

Storage/Stability: Store at -20°C/1 year

Immunogen: The antiserum was produced against synthesized phosphopeptide derived from human β -Catenin around the phosphorylation site of serine 37 (I-H-S^P-G-A).

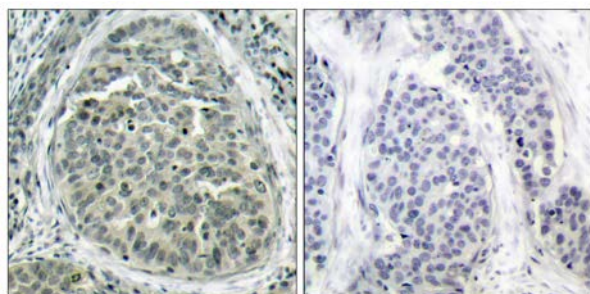
Purification: The antibody was affinity-purified from rabbit antiserum by affinity-chromatography using epitope-specific phosphopeptide. The antibody against non-phosphopeptide was removed by chromatography using non-phosphopeptide corresponding to the phosphorylation site.

Specificity/Sensitivity: β -Catenin (phospho-Ser37) antibody detects endogenous levels of β -Catenin only when phosphorylated at serine 37.

Reactivity: Human, Mouse, Rat

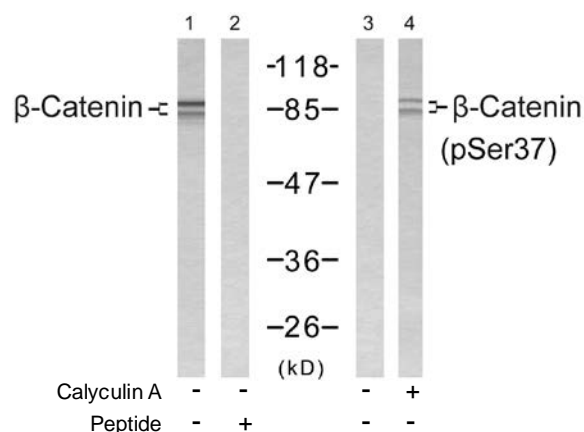
Applications: WB: 1:500~1:1000 IHC: 1:50~1:100

References: Novak A, et al. (1998) Proc Natl Acad Sci U S A; 95(8): 4374-4379
Marin O, et al. (2003) Proc Natl Acad Sci U S A; 100(18): 10193-10200
Okamura H, et al. (2004) Mol Cell Biol; 24(10): 4184-4195
Xing Y, et al. (2003) Genes Dev; 17(22): 2753-2764
Barth AI, et al. (1999) Proc Natl Acad Sci U S A; 96(9): 4947-4952



P-Peptide - +

Immunohistochemical analysis of paraffin-embedded human breast carcinoma tissue, using β -Catenin (phospho-Ser37) antibody (E011219).



Western blot analysis of extract from SW 626 cells, using β -Catenin (Ab-37) antibody (E021212, Lane 1 and 2) and β -Catenin (phospho-Ser37) antibody (E011219, Lane 3 and 4).

For Research Use Only