



EGFR (Phospho-Tyr1172) Antibody

E011220

Catalog Number: E011220-1, E011220-2

Amount: 50µg/50µl, 100µg/100µl

Swiss-Prot No. : P00533

Form of Antibody: Rabbit IgG in phosphate buffered saline (without Mg^{2+} and Ca^{2+}), pH 7.4, 150mM NaCl, 0.02% sodium azide and 50% glycerol.

Storage/Stability: Store at -20°C/1 year

Immunogen: The antiserum was produced against synthesized phosphopeptide derived from human EGFR around the phosphorylation site of tyrosine 1172 (P-D-Y^P-Q-Q).

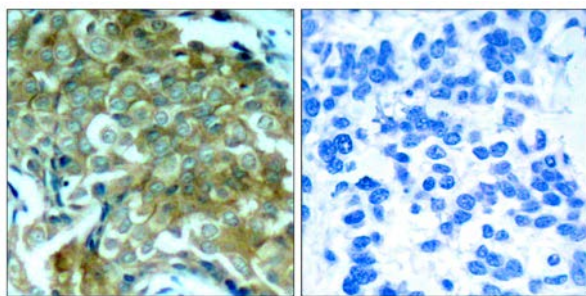
Purification: The antibody was affinity-purified from rabbit antiserum by affinity-chromatography using epitope-specific phosphopeptide. The antibody against non-phosphopeptide was removed by chromatography using non-phosphopeptide corresponding to the phosphorylation site.

Specificity/Sensitivity: EGFR (phospho-Tyr1172) antibody detects endogenous levels EGFR only when phosphorylated at tyrosine 1172.

Reactivity: Human, Mouse, Rat

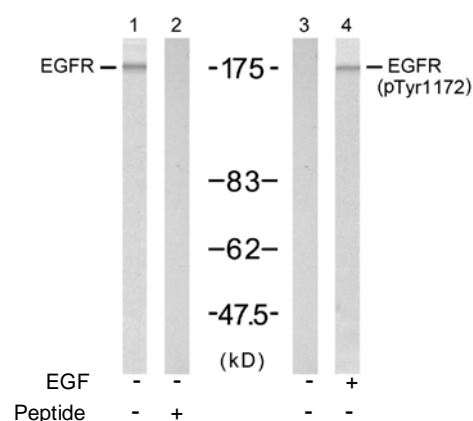
Applications: WB: 1:500~1:1000 IHC: 1:50~1:100

References: Noguchi T, et al. (1994) Mol Cell Biol 14(10): 6674-6682
Doherty JK, et al. (1999) Proc Natl Acad Sci U S A 96(19): 10869-10874
Kanner SB, et al. (1991) Mol Cell Biol 11(2): 713-720
Wu TT, et al. (1998) Mol Biol Cell 9(7): 1661-1674
O'Rourke DM, et al. (1997) Proc Natl Acad Sci U S A 94(7): 3250-3255



P-Peptide - +

Immunohistochemical analysis of paraffin-embedded human breast carcinoma tissue, using EGFR (phospho-Tyr1172) antibody (E011220).



Western blot analysis of extract from A431 cell untreated or treated with EGF (200ng/ml, 5min), using EGFR (Ab-1172) antibody (E021213, Lane 1 and 2) and EGFR (phospho-Tyr1172) antibody (E011220, Lane 3 and 4).

For Research Use Only