



Stathmin 1 (Phospho-Ser24) Antibody

E011224

Catalog Number: E011224-1, E011224-2

Amount: 50µg/50µl, 100µg/100µl

Swiss-Prot No.: P16949

All Names: stathmin 1, LAG, LAP18, Leukemia-associated gene protein, Leukemia-associated phosphoprotein p18, Metablastin, Oncoprotein 18, Op18, PR22, Phosphoprotein p19, Pr22 protein, Prosolin, STN1, pp17, pp19, stathmin

All Sites: Human: Ser24; Mouse: Ser24; Rat: Ser24

Form of Antibody: Rabbit IgG in phosphate buffered saline (without Mg^{2+} and Ca^{2+}), pH 7.4, 150mM NaCl, 0.02% sodium azide and 50% glycerol.

Storage/Stability: Store at -20°C/1 year

Immunogen: The antiserum was produced against synthesized phosphopeptide derived from human Stathmin 1 around the phosphorylation site of serine 24 (I-L-S^P-P-R).

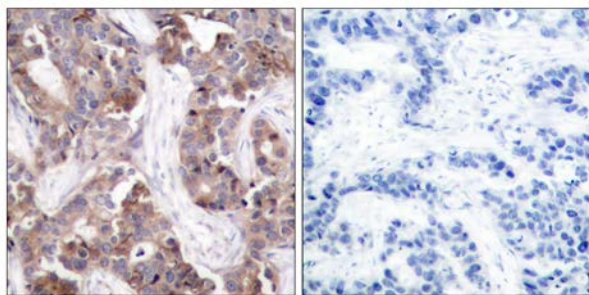
Purification: The antibody was affinity-purified from rabbit antiserum by affinity-chromatography using epitope-specific phosphopeptide. The antibody against non-phosphopeptide was removed by chromatography using non-phosphopeptide corresponding to the phosphorylation site.

Specificity/Sensitivity: Stathmin 1 (phospho-Ser24) antibody detects endogenous levels of Stathmin 1 only when phosphorylated at serine 24.

Reactivity: Human, Mouse, Rat

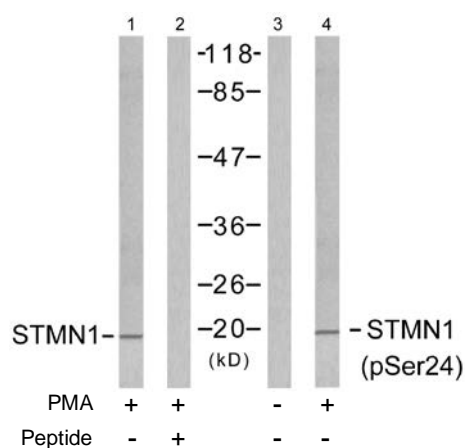
Applications: WB: 1:500~1:1000 IHC: 1:50~1:100

References: Boehm M, et al. (2002) EMBO J 21(13): 3390-3401.
Vadlamudi RK, et al. (2005) Mol Cell Biol 25(9): 3726-3736.
Zilfou JT, et al. (2001) Mol Cell Biol 21(12): 3974-3985.



P-Peptide - +

Immunohistochemical analysis of paraffin-embedded human breast carcinoma tissue using Stathmin 1 (phospho-Ser24) antibody (E011224).



Western blot analysis of extracts from Jurkat cells untreated or treated with PMA (1ng/ml, 15min), using Stathmin 1 (Ab-24) antibody (E021217, Line 1 and 2) and Stathmin 1 (phospho-Ser24) antibody (E011224, Line 3 and 4).

For Research Use Only