



IRS-1 (Phospho-Ser636) Antibody

E011230

Catalog Number: E011230-1, E011230-2

Amount: 50µg/50µl, 100µg/100µl

Swiss-Prot No. : P35568

Form of Antibody: Rabbit IgG in phosphate buffered saline (without Mg^{2+} and Ca^{2+}), pH 7.4, 150mM NaCl, 0.02% sodium azide and 50% glycerol.

Storage/Stability: Store at -20°C/1 year

Immunogen: The antiserum was produced against synthesized phosphopeptide derived from human IRS-1 around the phosphorylation site of serine 636 (P-M-S^P-P-K).

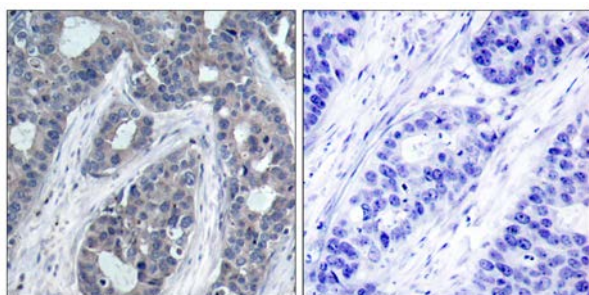
Purification: The antibody was affinity-purified from rabbit antiserum by affinity-chromatography using epitope-specific phosphopeptide. The antibody against non-phosphopeptide was removed by chromatography using non-phosphopeptide corresponding to the phosphorylation site.

Specificity/Sensitivity: IRS-1 (phospho-Ser636) antibody detects endogenous levels of IRS-1 only when phosphorylated at serine 636.

Reactivity: Human, Mouse, Rat

Applications: WB: 1:500~1:1000 IHC: 1:50-1:100

References: Ozes ON, et al. (2001) Proc Natl Acad Sci U S A; 98(8): 4640-4645
Tzatsos A, et al. (2006) Mol Cell Biol; 26(1): 63-76
Kadowaki T, et al. (2000) J Clin Invest; 106(4): 459-465
Ozes ON, et al. (2001) Proc Natl Acad Sci U S A; 98(8): 4640-4645
Szanto I, et al. (2000) Proc Natl Acad Sci U S A; 97(5): 2355-2360

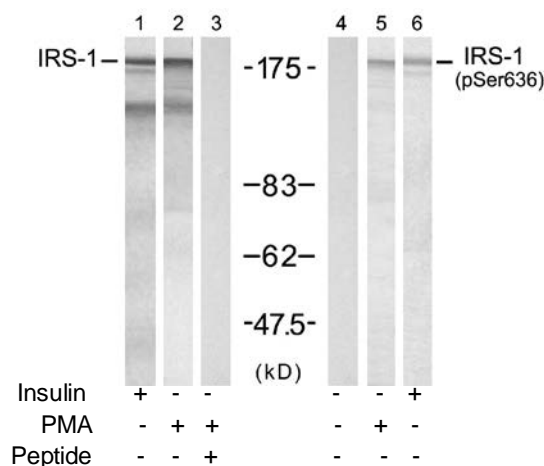


P-Peptide

-

+

Immunohistochemical analysis of paraffin-embedded human breast carcinoma tissue, using IRS-1 (phospho-Ser636) antibody (E011230).



Western blot analysis of extracts from 293 cells treated with insulin(100nM, 30min) or PMA (0.2µM, 15min) using IRS-1 (Ab-636) antibody (E021223, Lane 1, 2 and 3) and IRS-1 (phospho-Ser636) antibody (E011230, Lane 4, 5 and 6).

For Research Use Only