



## IRS-1 (Phospho-Ser639) Antibody

E011231

**Catalog Number:** E011231-1, E011231-2

**Amount:** 50µg/50µl, 100µg/100µl

**Swiss-Prot No. :** P35568

**Form of Antibody:** Rabbit IgG in phosphate buffered saline (without  $Mg^{2+}$  and  $Ca^{2+}$ ), pH 7.4, 150mM NaCl, 0.02% sodium azide and 50% glycerol.

**Storage/Stability:** Store at -20°C/1 year

**Immunogen:** The antiserum was produced against synthesized phosphopeptide derived from human IRS-1 around the phosphorylation site of serine 639 (P-K-S<sup>P</sup>-V-S).

**Purification:** The antibody was affinity-purified from rabbit antiserum by affinity-chromatography using epitope-specific phosphopeptide. The antibody against non-phosphopeptide was removed by chromatography using non-phosphopeptide corresponding to the phosphorylation site.

**Specificity/Sensitivity:** IRS-1 (phospho-Ser639) antibody detects endogenous levels of IRS-1 only when phosphorylated at serine 639.

**Reactivity:** Human, Mouse, Rat

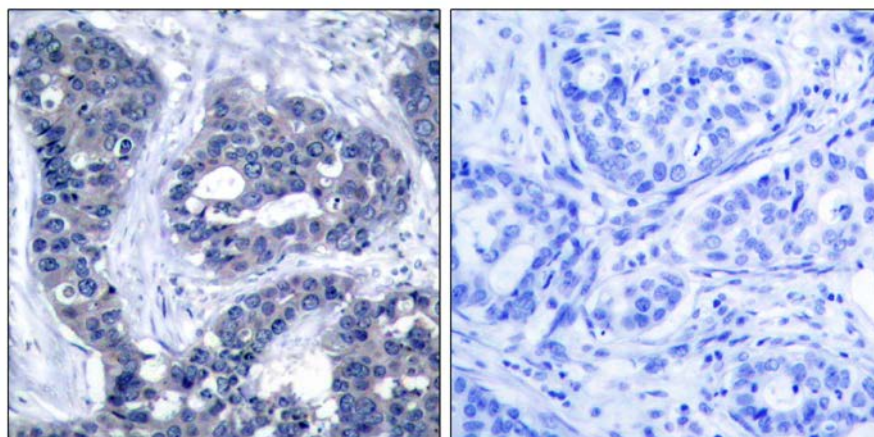
**Applications:** IHC: 1:50~1:100

**References:** Ozes ON, et al. (2001) Proc Natl Acad Sci U S A; 98(8): 4640-4645

Tzatsos A, et al. (2006) Mol Cell Biol; 26(1): 63-76

Steppan CM, et al. (2005) Mol Cell Biol; 25(4): 1569-1575

Batty IH, et al. (2004) Biochem J; 379(Pt 3): 641-651



P-Peptide

-

+

Immunohistochemical analysis of paraffin-embedded human breast carcinoma tissue, using IRS-1 (phospho-Ser639) antibody (E011231).

**For Research Use Only**